






## 115 Southee Road Hobartville NSW

3  1  2 

Bennett Property proudly presents this lovely three-bedroom home in a convenient location.

Spacious open plan design with timber floors. Large living/lounge room and dining room. A modern-style kitchen filled with natural light and plenty of storage options. The kitchen also has a dishwasher and electric oven. All bedrooms are well sized with built-in cupboards and serviced by the main bathroom with shower and bathtub. Internal laundry with convenient external access.

The property has a fully fenced private rear yard with an undercover pergola area. Drive through access to a single carport which leads to a storage shed.

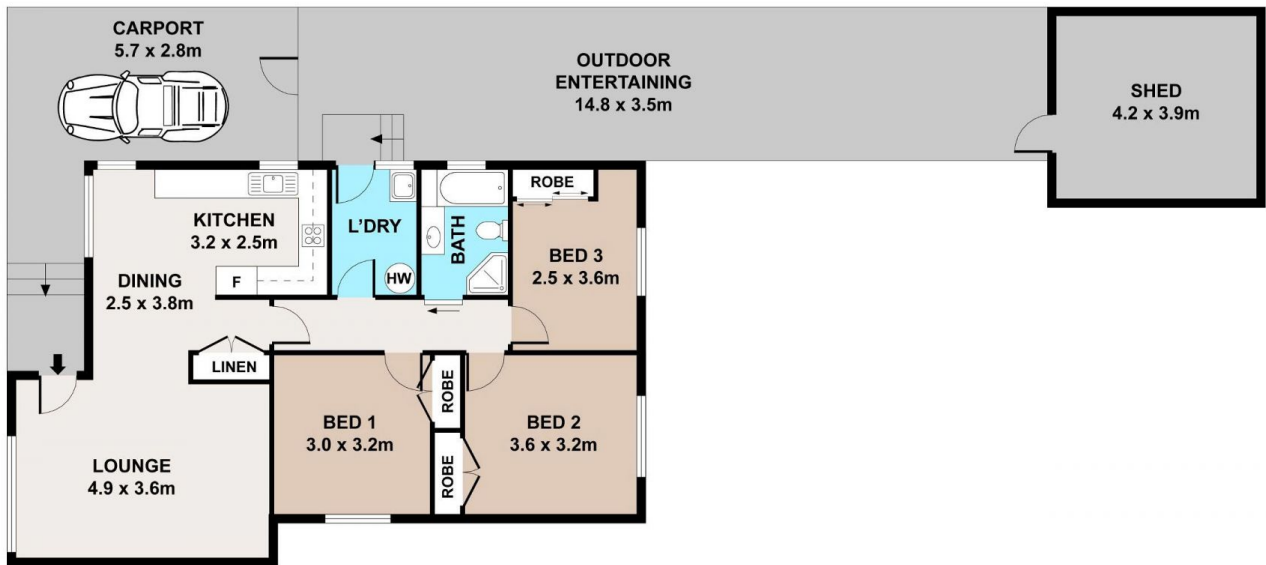
**Type** : House

**View** : <https://www.bennettproperty.com.au/lease/nsw/hawkesbury/hobartville/residential/house/8325890>



**Nicole Robb**  
02 4578 1234

[For full version visit the website](https://www.bennettproperty.com.au)



## 115 SOUTHEE ROAD, HOBARTVILLE

**DISCLAIMER**

PLAN SHOWN ARE FOR MARKETING PURPOSES ONLY. ALL DIMENSIONS ARE APPROXIMATE AND NOT TO SCALE. THEY ARE SUBJECT TO ERRORS AND INACCURACIES AND NO LIABILITY WILL BE ACCEPTED. INTERESTED PARTIES SHOULD MAKE THEIR OWN INQUIRES

