



63 Southee Road Hobartville NSW

3  1  1 

Lovely three-bedroom brick veneer home positioned on a welcoming, established block overlooking lovely rural pastures. Situated in a prime central location, it would make a fantastic first home or great investment property!

The property has secure fenced front and rear yards with convenient side access. Also offering a carport with workshop space/shed for extra storage or handyman work area. The rear yard has neat and tidy paved sections with undercover entertaining space plus garden shed for yard tools. A total of 552 square metres (approx) with established lawns and easy-care gardens.

Key Highlights:

[For full version visit the website](https://www.bennettproperty.com.au)

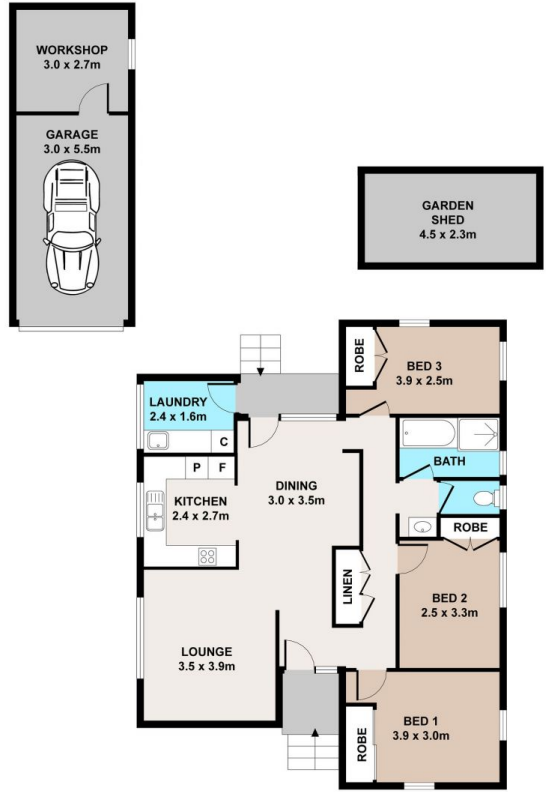
Type : House
Price : UNDER CONTRACT
Land Size : 552 sqm
View : <https://www.bennettproperty.com.au/sale/nsw/hawkesbury/hobartville/residential/house/8197098>



Michael Bennett
02 4578 1234



Jacob Bennett
02 4578 1234



63 SOUTHEE ROAD, HOBARTVILLE

DISCLAIMER

PLAN SHOWN ARE FOR MARKETING PURPOSES ONLY. ALL DIMENSIONS ARE APPROXIMATE AND NOT TO SCALE. THEY ARE SUBJECT TO ERRORS AND INACCURACIES AND NO LIABILITY WILL BE ACCEPTED. INTERESTED PARTIES SHOULD MAKE THEIR OWN INQUIRES

