






## 15A Castlereagh Road Hobartville NSW

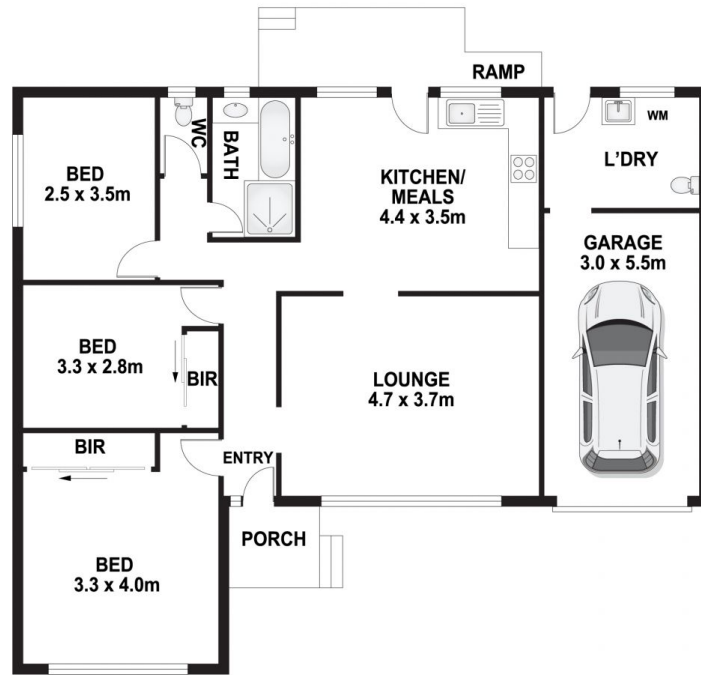
3  1  1 

Bennett Property Richmond proudly presents this charming 3 bedroom, 1 bathroom home in peaceful Hobartville. Perfectly situated in a convenient location, this property boasts a range of features to suit your needs.

**Land Size** : 677 sqm  
**View** : <https://www.bennettproperty.com.au/lease/nsw/hawkesbury/hobartville/residential/house/7948977>

### Featuring:

- 3 Bedrooms: Two with built in robes and main with a ceiling fan
- Fully Fenced Front and Rear Yards
- Single Lock-up Garage
- Bathroom with Bath and Separate Toilet
- Split System Air Conditioning in the living area
- NBN & gas connection
- Located in a convenient location - close to , schools, shops, restaurants and public transport.
- Pets Upon Application



## 15A CASTLEREAGH ROAD, HOBARTVILLE

**DISCLAIMER**

PLANS SHOWN ARE FOR MARKETING PURPOSES ONLY, ALL DIMENSIONS ARE APPROXIMATE AND NOT TO SCALE. THEY ARE SUBJECT TO ERRORS AND INACCURACIES AND NO LIABILITY WILL BE ACCEPTED. INTERESTED PARTIES SHOULD MAKE THEIR OWN ENQUIRIES.

