



20 Lieutenant Bowen Road Bowen Mountain NSW

3 2 2

Presenting an amazing opportunity to first home buyers or the growing family to purchase a quality brick home, ready to move in and add your own personal style.

The home is split level design and offers an exceptionally funky and stylish layout with plenty of room for everyone. Featuring impressive entry with high pitched ceilings leading into formal sunken lounge area with exposed timber beam, decorative lights fittings, gas point, split system air conditioning and sliding door access to rear yard. Large functional kitchen and dining area with electric cooking, spacious bench tops, plentiful cabinetry and pretty outlook to rear outside area. Dining also with sliding door rear access. The master suite/parents retreat is located on upper level and very well sized. Having ceiling fan, window mounted air conditioning, big walk in robe and lovely ensuite with beautiful treetop outlook over yard. Other

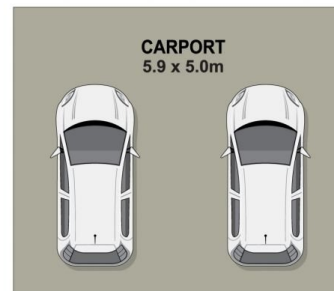
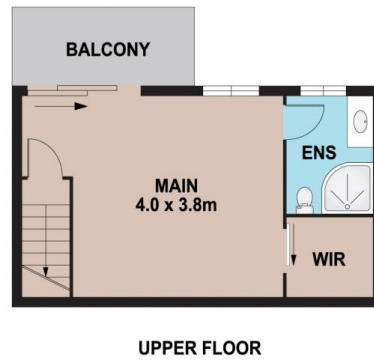
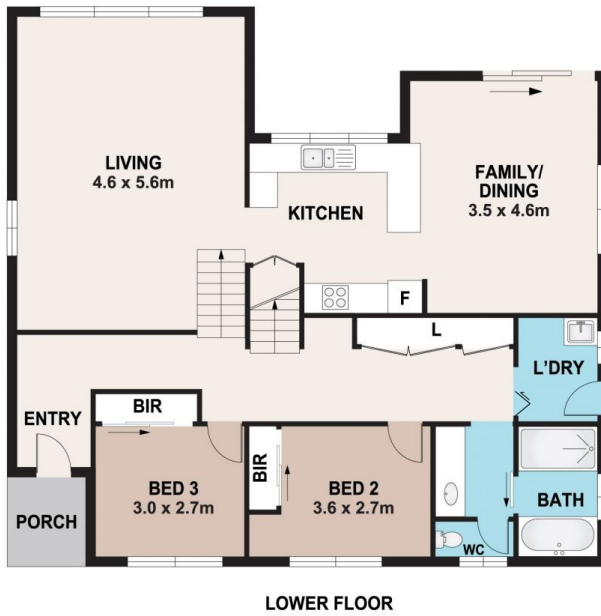
Price : \$790,000 - \$840,000
Land Size : 689 sqm
View : <https://www.bennettproperty.com.au/sale/nsw/hawkesbury/bowen-mountain/residential/house/7906617>



Jacob Bennett
02 4578 1234



Michael Bennett
02 4578 1234



20 LIEUTENANT BOWEN ROAD, BOWEN MOUNTAIN

DISCLAIMER

PLANS SHOWN ARE FOR MARKETING PURPOSES ONLY, ALL DIMENSIONS ARE APPROXIMATE AND NOT TO SCALE. THEY ARE SUBJECT TO ERRORS AND INACCURACIES AND NO LIABILITY WILL BE ACCEPTED. INTERESTED PARTIES SHOULD MAKE THEIR OWN ENQUIRIES.

