



## 83F Willow Glen Road Kurrajong NSW

6 4 2

Bennett Property would like to exclusively welcome you to "The Chateau" - a quintessential country manor, full of charm and timeless appeal, set in the beautiful Kurrajong foot hills.

This grand two storey home is situated high on the hill overlooking picturesque acres which provide breath taking views and accommodates for the larger or extended family with second self contained cottage. The property is set on 11.5 acres (approx) and has quality fittings and fixtures throughout the entire homestead/s, consistent with the Grand Georgian design.

The main house consists of three large living areas, home office, formal lounge, slow-combustion fireplace, ducted air conditioning, decorative cornices and skirting boards, high ceilings with ornate ceiling roses, plantation shutters and

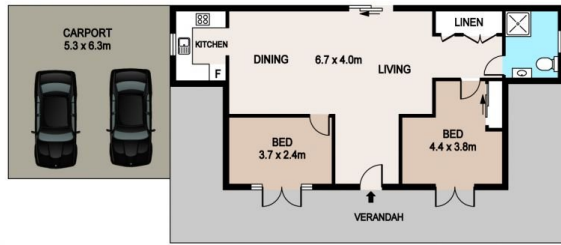
**Price** : CONTACT AGENT  
**Land Size** : 11.5 Acres  
**View** : <https://www.bennettproperty.com.au/sale/nsw/hawkesbury/kurrajong/residential/house/7891050>



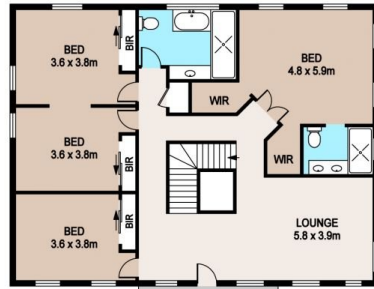
**Michael Bennett**  
02 4578 1234



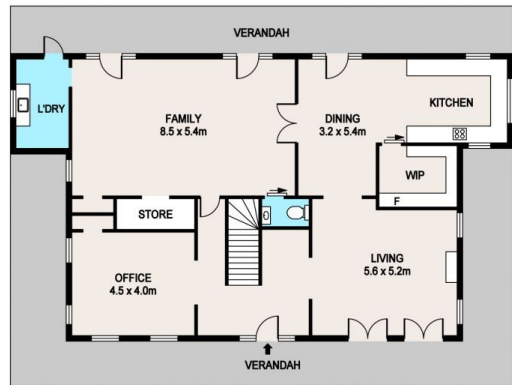
**Jacob Bennett**  
02 4578 1234



SECOND HOUSE



FIRST FLOOR



GROUND FLOOR

## 83F WILLOW GLEN RD, KURRAJONG

**DISCLAIMER**

PLANS SHOWN ARE FOR MARKETING PURPOSES ONLY. ALL DIMENSIONS ARE APPROXIMATE AND NOT TO SCALE. THEY ARE SUBJECT TO ERRORS AND INACCURACIES AND NO LIABILITY WILL BE ACCEPTED. INTERESTED PARTIES SHOULD MAKE THEIR OWN INQUIRES.

