



514 Wilberforce Road Wilberforce NSW

3 1 2

This is an exceptional opportunity to purchase an affordable parcel of land offering great potential and presenting a desirable lifestyle in the sought-after suburb of Wilberforce.

Situated on over 1 acre of mostly cleared land, all arable with a semi-rural outlook. Featuring a comfortable, older-style character cottage / farmhouse. Providing spacious living with split-system air conditioning plus sunroom. 2 bedrooms with built-in cupboards. Modern kitchen and updated bathroom. Potential to add your own personal touches to the home or consider building a brand new home (STCA).

The property is fully fenced with a garage, carport, workshop, and shed. Ideal for trucks, machinery, or horses/livestock. 3 x access and two road frontages.

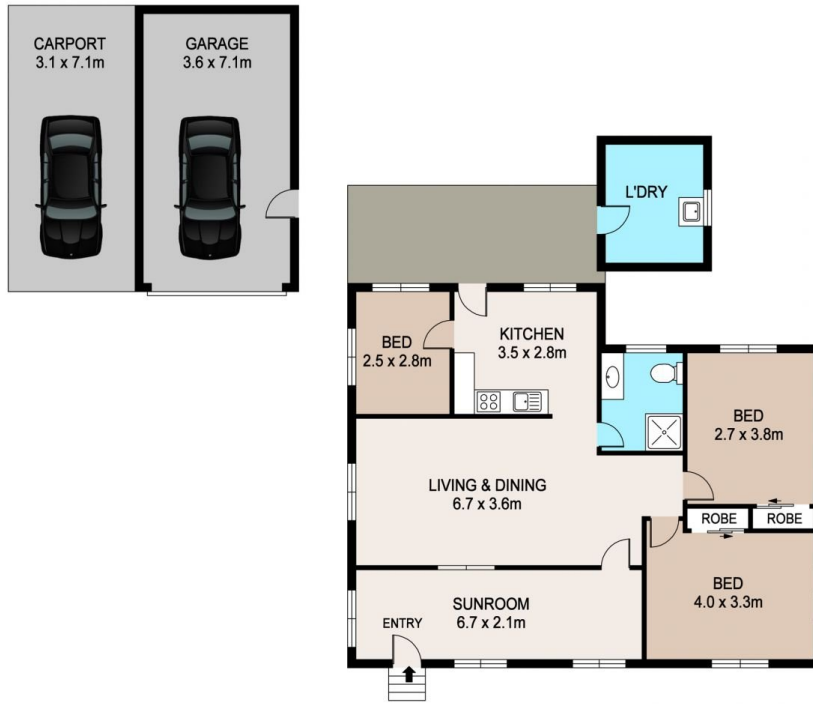
Price : Guide \$1,000,000 - \$1,100,000
Land Size : 7012 sqm
View : <https://www.bennettproperty.com.au/sale/nsw/hawkesbury/wilberforce/residential/house/7876936>



Michael Bennett
02 4578 1234



Jacob Bennett
02 4578 1234



DISCLAIMER

PLANS SHOWN ARE FOR MARKETING PURPOSES ONLY. ALL DIMENSIONS ARE APPROXIMATE AND NOT TO SCALE. THEY ARE SUBJECT TO ERRORS AND INACCURACIES AND NO LIABILITY WILL BE ACCEPTED. INTERESTED PARTIES SHOULD MAKE THEIR OWN ENQUIRIES.

