






## 2 Gorricks Lane Freemans Reach NSW

6  3  3 

A well-executed enormous double-story family home with 6 bedrooms in a commanding rural position on a large fenced parcel of approximately 4 acres with two road frontages.

The downstairs level consists of three bedrooms, one bathroom, and a generous lounge and dining area with high-pitched cedar-lined ceilings. A modern open-plan kitchen and family area flow out to a rear verandah with lovely views.

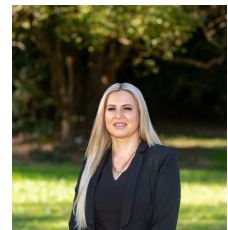
There is an internal staircase to the upper level, which provides for three bedrooms: the master with a walk-in robe and ensuite, a second main bathroom, plus an open-plan kitchen and family room. The wrap-around deck affords a stunning outlook over the property and district views.

Features include air conditioning, a fireplace, fans, 2

**Land Size** : 4 Acres  
**View** : <https://www.bennettproperty.com.au/sale/nsw/hawkesbury/freemans-reach/residential/house/7839945>



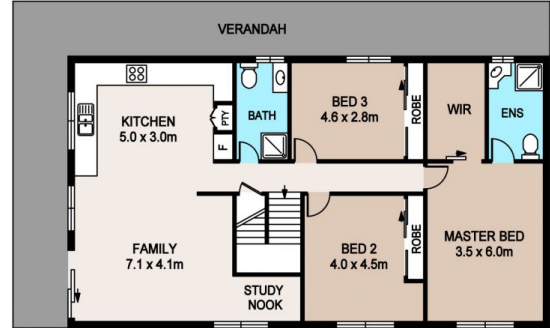
**Michael Bennett**  
02 4578 1234



**Belinda Lovan**  
02 4578 1234



GROUND FLOOR



FIRST FLOOR

## 2 GORRLICKS LANE, FREEMANS REACH

### DISCLAIMER

PLANS SHOWN ARE FOR MARKETING PURPOSES ONLY. ALL DIMENSIONS ARE APPROXIMATE AND NOT TO SCALE. THEY ARE SUBJECT TO ERRORS AND INACCURACIES AND NO LIABILITY WILL BE ACCEPTED. INTERESTED PARTIES SHOULD MAKE THEIR OWN INQUIRES.