




### 31 Senta Road Londonderry NSW

11  5  4 

Situated at the end of a quiet cul-de-sac amongst up-scale rural properties is this substantial, solid double brick home on 10 level acres (approx) with an additional 4-bedroom cottage!

The home is uniquely designed with high-pitched ceilings and caters to the largest of large families. Featuring a spacious family lounge area, slate flooring, ducted air conditioning throughout, a well-appointed open-plan kitchen, and dining with a lovely pool and rear yard outlook. The kitchen features an island bench, stone tops, copious amounts of storage, cupboard, and bench space, a gas cooktop with an electric oven, stainless steel appliances, a smaller pantry cupboard, and an additional walk-in pantry. There are large built-in wardrobes in all bedrooms and a huge master suite with an ensuite and his and her walk-in closets. It also has an office/study and loads of storage

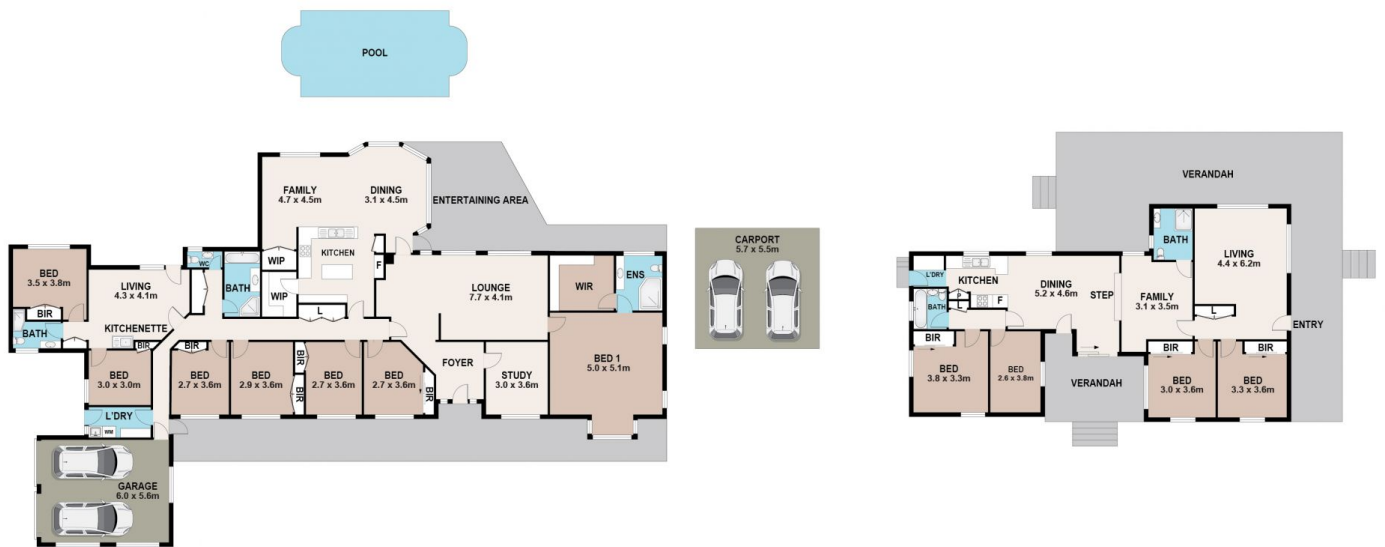
**Price** : \$ 2,880,000  
**Land Size** : 4.02 ha  
**View** : <https://www.bennettproperty.com.au/sale/nsw/hawkesbury/londonderry/residential/house/7833181>



**Michael Bennett**  
02 4578 1234



**Jacob Bennett**  
02 4578 1234



# 31 SENTA ROAD, LONDONDERRY

## DISCLAIMER

PLANS SHOWN ARE FOR MARKETING PURPOSES ONLY, ALL DIMENSIONS ARE APPROXIMATE AND NOT TO SCALE. THEY ARE SUBJECT TO ERRORS AND INACCURACIES AND NO LIABILITY WILL BE ACCEPTED. INTERESTED PARTIES SHOULD MAKE THEIR OWN ENQUIRIES.

