



## 26 Londonderry Road Hobartville NSW

5 1 2

A spacious contemporary-style family home offering a low maintenance lifestyle, situated exceptionally close to town in the popular suburb of Hobartville, zoned R3 Development Zone.

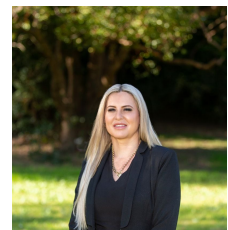
This beautiful home has been meticulously cared for, recently freshly painted and with new carpets. Offering large lounge area with polished timber floor boards, fireplace and split system air conditioning. Modern kitchen and dining areas, great storage in kitchen and quality appliances. Having five generous sized bedrooms, four with mirrored built-ins, ceiling fans and ducted heating. Floor to ceiling tiling in laundry & bathroom with spa bath. Additional separate teenagers retreat or potential home office.

Enjoy weekends, downtime or entertaining with family and

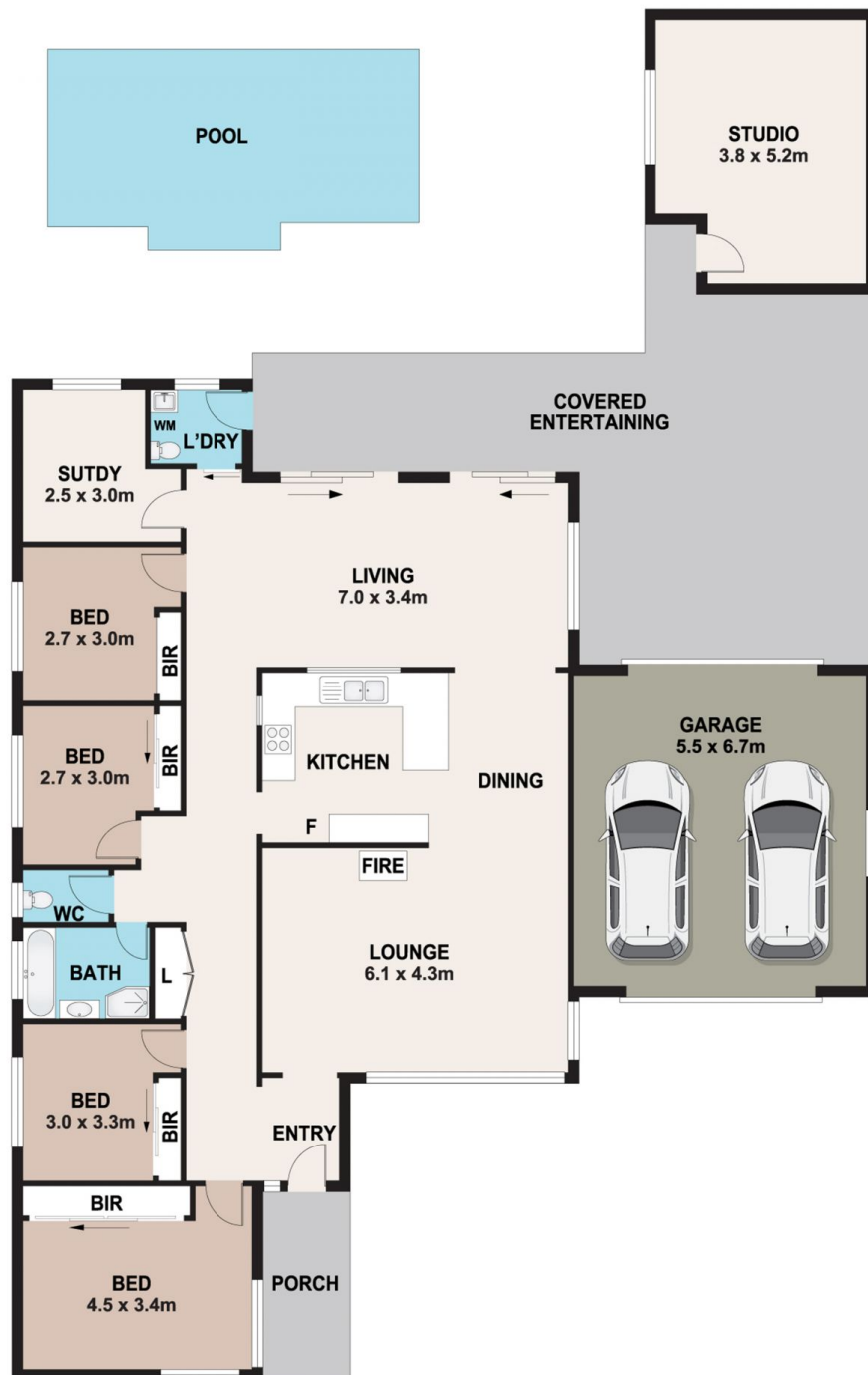
**Price** : \$1,100,000 - \$1,150,000  
**Land Size** : 664 sqm  
**View** : <https://www.bennettproperty.com.au/sale/nsw/hawkesbury/hobartville/residential/house/7797952>



**Michael Bennett**  
02 4578 1234



**Belinda Lovan**  
02 4578 1234



## 26 LONDONDERRY ROAD, HOBARTVILLE

### DISCLAIMER

PLANS SHOWN ARE FOR MARKETING PURPOSES ONLY. ALL DIMENSIONS ARE APPROXIMATE AND NOT TO SCALE. THEY ARE SUBJECT TO ERRORS AND INACCURACIES AND NO LIABILITY WILL BE ACCEPTED. INTERESTED PARTIES SHOULD MAKE THEIR OWN INQUIRES.