



15 Douglas Farm Road Kurrajong Hills NSW

4 🏠 2 🚗 8 🚗

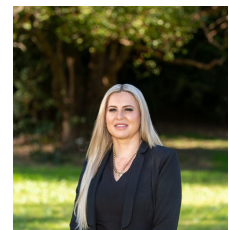
Bennett Property have the pleasure of presenting this magnificent stately residence of grand proportions. Situated in an absolute private and quiet locale, set on just over 1 Acre of completely landscaped grounds. This property is a masterpiece in it's own right, so stunning its almost surreal!

Quality steel frame home situated in a high position with wrap around verandahs. Upon entry you will be captivated by the commanding bespoke entrance, leading into a welcoming foyer with formal lounge and dining rooms fitted with regal timber archways, soaring high ceilings, decorative cornices and ceiling roses, spotted gum timber floors and period piece open gas fireplace. Desirable long hallway leads into an ideal design layout of the home. Spacious main open plan living and dining with downlights and large bay windows to enjoy the view of the grounds which filter a gorgeous outlook. Featuring designer

Price : \$2,000,000 - \$2,200,000
Land Size : 4562 sqm
View : <https://www.bennettproperty.com.au/sale/nsw/hawkesbury/kurrajong-hills/residential/house/7783570>



Michael Bennett
02 4578 1234



Belinda Lovan
02 4578 1234



15 DOUGLAS FARM ROAD, KURRAJONG HILLS

DISCLAIMER

PLANS SHOWN ARE FOR MARKETING PURPOSES ONLY. ALL DIMENSIONS ARE APPROXIMATE AND NOT TO SCALE. THEY ARE SUBJECT TO ERRORS AND INACCURACIES AND NO LIABILITY WILL BE ACCEPTED. INTERESTED PARTIES SHOULD MAKE THEIR OWN ENQUIRIES.

