



6 Maple Street Bowen Mountain NSW

4 2 2

A warm and welcoming quality family home, situated in the beautiful suburb of Bowen Mountain in a whisper quiet street.

This home presents very neat, tidy and has exceptional street appeal. Featuring a spacious contemporary design with large open plan living areas, timber look flooring, slow combustion fire place, split system air conditioning and offering a lovely bushland outlook. Space will never be an issue with the well appointed modern kitchen, consisting of an abundance of bench area and cabinetry, quality appliances, walk in pantry, downlights and filled with natural light. Plenty of room for all the family with four good sized bedrooms - all having built in cupboards. The master room has a walk in robe and ensuite. Convenient three way main bathroom with shower and bath tub. There is an additional office / study room and extra formal sitting room

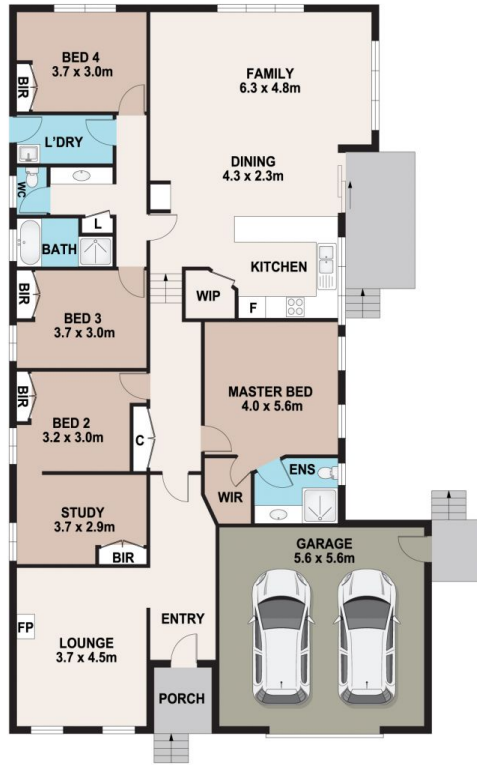
Price : \$ 875,000
Land Size : 594 sqm
View : <https://www.bennettproperty.com.au/sale/nsw/hawkesbury/bowen-mountain/residential/house/7760676>



Michael Bennett
02 4578 1234



Jacob Bennett
02 4578 1234



6 MAPLE STREET, BOWEN MOUNTAIN

DISCLAIMER

PLANS SHOWN ARE FOR MARKETING PURPOSES ONLY, ALL DIMENSIONS ARE APPROXIMATE AND NOT TO SCALE. THEY ARE SUBJECT TO ERRORS AND INACCURACIES AND NO LIABILITY WILL BE ACCEPTED. INTERESTED PARTIES SHOULD MAKE THEIR OWN ENQUIRIES.

