






1117 Grose Vale Road Kurrajong NSW

4  3  4 

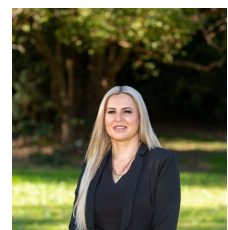
Bennett Property have the pleasure of welcoming you to this charmingly presented and lovingly renovated homestead in the heart of Kurrajong Village. A mixture of traditional and contemporary design has been blended to create a one of a kind masterpiece!

A welcoming open plan layout with spacious living and dining areas, formal dining, feature s/c fire place, downlights, gas point, c/fans, air cons and polyurethane polished timber floors. No expense has been spared in updating the home with near new insulation, carpet, electrical wiring, bespoke cornices, custom Edwardian style skirting boards, architraves and the added touch of modernity with Corinthian full glass doors installed. Also featuring: study/office and another games room/library, sunroom with own access.

Price : \$1,600,000 - \$1,700,000
Land Size : 2733 sqm
View : <https://www.bennettproperty.com.au/sale/nsw/hawkesbury/kurrajong/residential/house/7715412>



Michael Bennett
02 4578 1234



Belinda Lovan
02 4578 1234



1117 GROSE VALE ROAD, KURRAJONG

DISCLAIMER

PLANS SHOWN ARE FOR MARKETING PURPOSES ONLY, ALL DIMENSIONS ARE APPROXIMATE AND NOT TO SCALE. THEY ARE SUBJECT TO ERRORS AND INACCURACIES AND NO LIABILITY WILL BE ACCEPTED. INTERESTED PARTIES SHOULD MAKE THEIR OWN ENQUIRIES.

