



14 Pamela Crescent Bowen Mountain NSW

3  1  1 

Prime half acre block (Approx. 2,010 sqm) in millionaires row with an ugly duckling house ready for demolition or serious renovation. The home is a solid 3 bedroom brick veneer + tile home but the works required are not for the faint hearted. Roll up your sleeves, call in favours from your tradie mates and be prepared to work hard and this property could be worth a lot, lot more than you pay for it.

There is approximately 30 metres road frontage, a great water supply and on-site septic. If you'd like to bring your chainsaw, the once breathtaking views would come alive again!

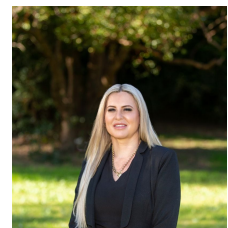
Alternatively bring the bulldozer and demolish the home and build your own home on one of the finest blocks of land in the district.

Urgent Sale - Must be sold!

Price : \$ 705,000
Land Size : 2010 sqm
View : <https://www.bennettproperty.com.au/sale/nsw/hawkesbury/bowen-mountain/residential/house/7681581>



Jacob Bennett
02 4578 1234



Belinda Lovan
02 4578 1234



14 PAMELA CRESCENT, BOWEN MOUNTAIN

DISCLAIMER

PLANS SHOWN ARE FOR MARKETING PURPOSES ONLY. ALL DIMENSIONS ARE APPROXIMATE AND NOT TO SCALE. THEY ARE SUBJECT TO ERRORS AND INACCURACIES AND NO LIABILITY WILL BE ACCEPTED. INTERESTED PARTIES SHOULD MAKE THEIR OWN ENQUIRIES.

