

24 Bennelong Place East Kurrajong NSW

3 2 4

Escape to the country and let your senses be captivated by "Tarragen" - a breathtaking New England style estate offering peace, serenity and natural beauty.

Located down a private driveway and situated on approximately 10 acres, this home has an abundance of style along with practicality. With a fine eye to detail, this country homestead boasts grace and cosy character charm with striking Cypress timber floor boards, cedar wood doors/frames and 2.9 metre high ceilings. Spacious open plan lounge and dining areas with lovely northerly sun aspect, comfort of ducted air-conditioning throughout and brick fireplace, overlooking a phenomenal bush outlook with double french door access to outside verandah. Impressive modern kitchen with amazing functional space for cooking prep and appliances. Offering Miele dishwasher, striking and durable bench tops, gas cooktop

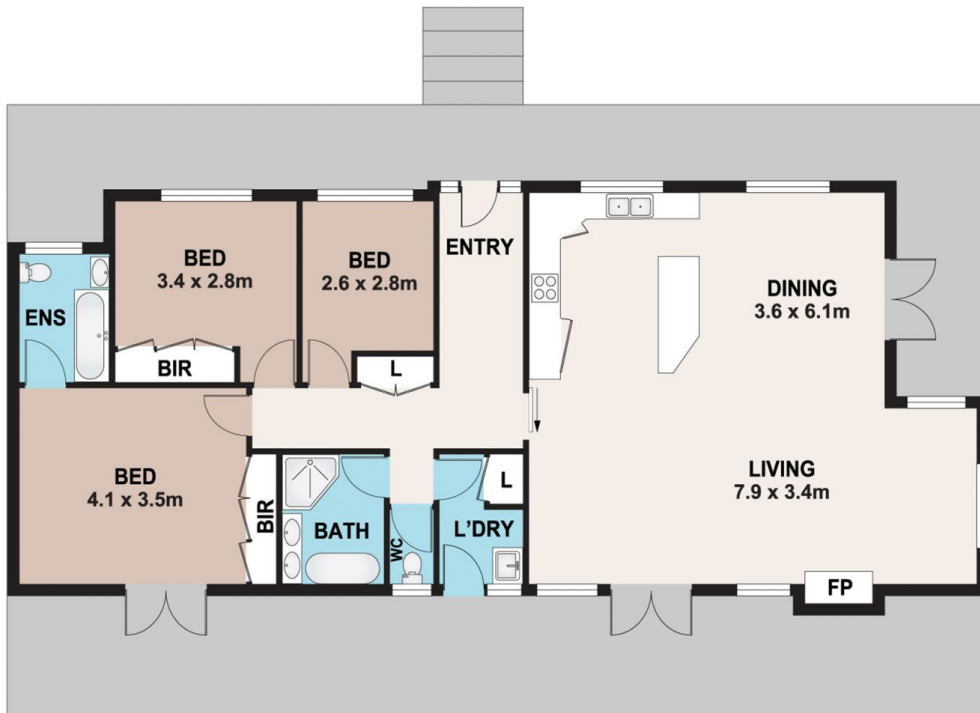
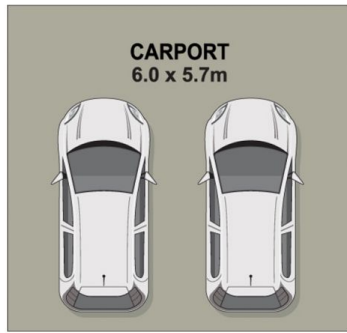
Price : \$ 1,650,000
Land Size : 10 Acres
View : <https://www.bennettproperty.com.au/sale/nsw/hawkesbury/east-kurrajong/residential/homeuse/7570656>



Michael Bennett
02 4578 1234



Jacob Bennett
02 4578 1234



24 BENNELONG PLACE, EAST KURRAJONG

DISCLAIMER

PLANS SHOWN ARE FOR MARKETING PURPOSES ONLY. ALL DIMENSIONS ARE APPROXIMATE AND NOT TO SCALE. THEY ARE SUBJECT TO ERRORS AND INACCURACIES AND NO LIABILITY WILL BE ACCEPTED. INTERESTED PARTIES SHOULD MAKE THEIR OWN INQUIRES.

