



1 Nina Place Kurrajong Heights NSW

3 2 2

Unique rendered brick residence with a striking terracotta tile roof. Set on a high corner block (1012 sqm) this stylish home has a distinctive French flavour, offering privacy, spaciousness and lovely views.

The entrance foyer has charming French doors leading to impressive lounge and dining rooms. The central living area has tiles floors, high ceilings, air conditioning and a wet bar- ideal for entertaining. The kitchen, with gas cooking, dishwasher and a timber benchtop enjoys a lovely outlook to the garden.

The master bedroom overlooks a sun-drenched courtyard and has a large walk-in robe and ensuite that features a twin shower, large bath and a double sink. The additional 2 bedrooms have good sized built-ins. The main bathroom has a shower and bath with separate toilet. Featuring a

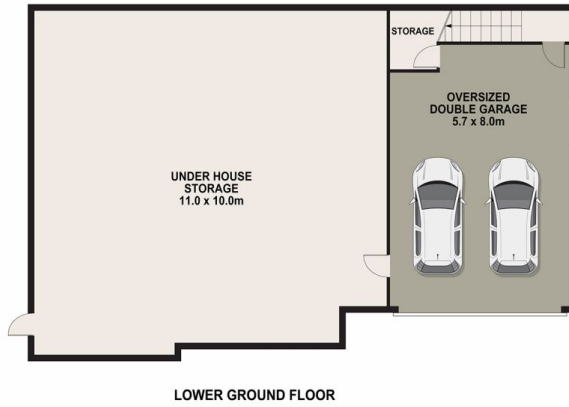
Price : \$ 785,000
Land Size : 1012 sqm
View : <https://www.bennettproperty.com.au/sale/nsw/hawkesbury/kurrajong-heights/residential/house/7414290>



Michael Bennett
02 4578 1234



Jacob Bennett
02 4578 1234



1 NINA PLACE, KURRAJONG HEIGHTS

DISCLAIMER

PLANS SHOWN ARE FOR MARKETING PURPOSES ONLY. ALL DIMENSIONS ARE APPROXIMATE AND NOT TO SCALE. THEY ARE SUBJECT TO ERRORS AND INACCURACIES AND NO LIABILITY WILL BE ACCEPTED. INTERESTED PARTIES SHOULD MAKE THEIR OWN ENQUIRIES.

