



2/28 Paget Street Richmond NSW

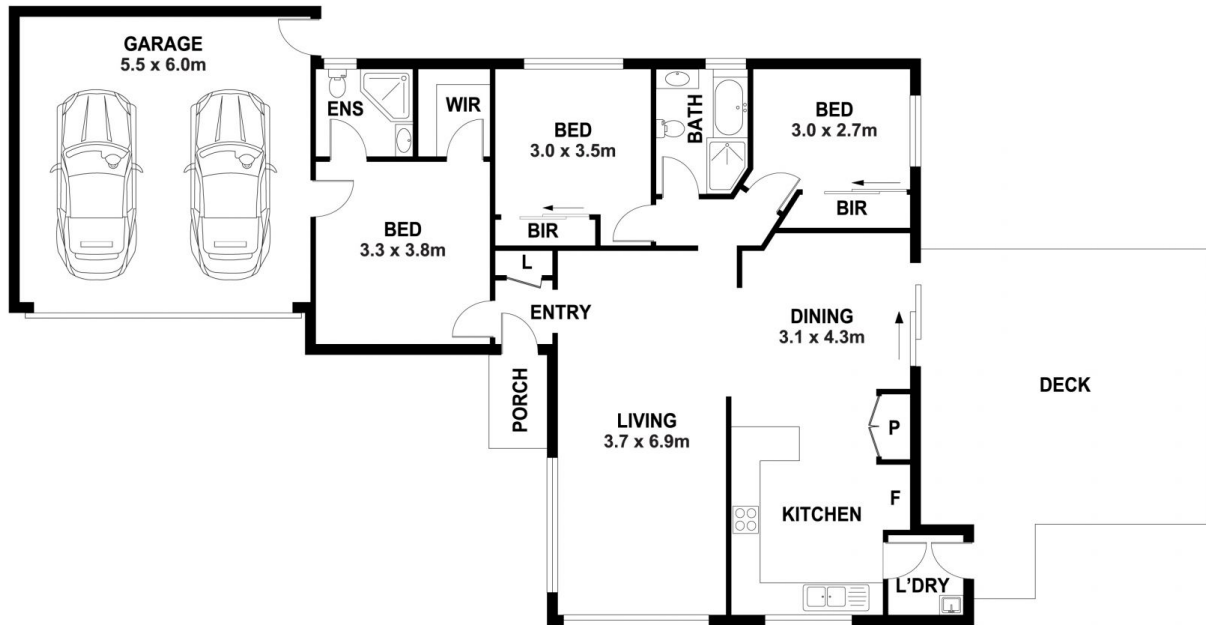
3 2 2

This well maintained 3 bedroom home is in a convenient location in the heart of Richmond. Set back from the street, It features generously proportioned living spaces and three spacious bedrooms all with built-in robes. Outside, you will find a low maintenance oasis where you can relax in your large undercover alfresco area.

View : <https://www.bennettproperty.com.au/lease/nsw/hawkesbury/richmond/residential/house/7323183>

Featuring:

- Large open living space
- Modern kitchen adjoining separate dining space which opens onto the entertaining area
- Master bedroom with a walk in robe and ensuite
- Internal Laundry
- Ducted Air-con
- Large double garage with internal access
- Large undercover entertaining area and a low maintenance yard



2/28 PAGET STREET, RICHMOND

DISCLAIMER

PLANS SHOWN ARE FOR MARKETING PURPOSES ONLY. ALL DIMENSIONS ARE APPROXIMATE AND NOT TO SCALE. THEY ARE SUBJECT TO ERRORS AND INACCURACIES AND NO LIABILITY WILL BE ACCEPTED. INTERESTED PARTIES SHOULD MAKE THEIR OWN ENQUIRIES.

