



115 Mountain Avenue Yarramundi NSW

4 1 6

Spacious, brick veneer tile ranch style homestead sheltered in a very quiet + peaceful no through road.

The home is in excellent condition, having been recently updated and well maintained. Year round comfort is assured with ducted air-conditioning, ceiling fans and a cosy fireplace. There are 4 bedrooms (3 with built-ins), a 3 way bathroom, a timber kitchen with stainless steel appliances and good sized living areas looking out to front and rear verandah. There is also timber/tile flooring alongside timber shutters. The property is ideal for entertaining with a beautiful inground pool with travertine paving and glass fencing. There is plenty of room for cars and extra vehicles with a tandem garage, large 10x10 shed with 3-Phase power, 2nd garage with workshop area, large garden storage and a 3 bay carport. The land is gently sloping and fully fenced, with established grounds &

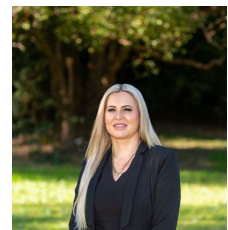
Price : \$ 1,470,000

Land Size : 4046 sqm

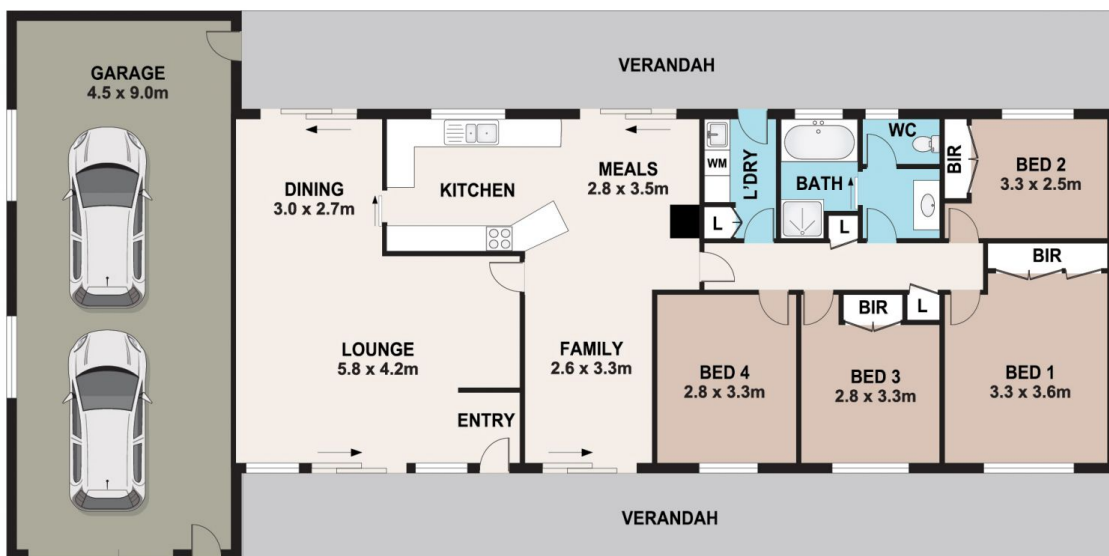
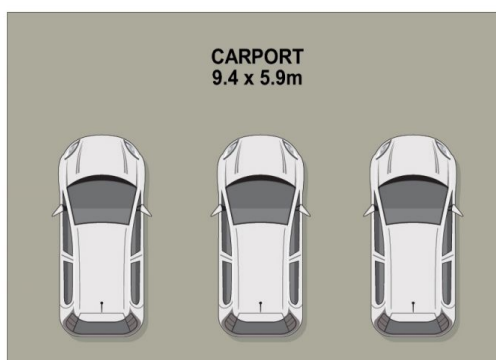
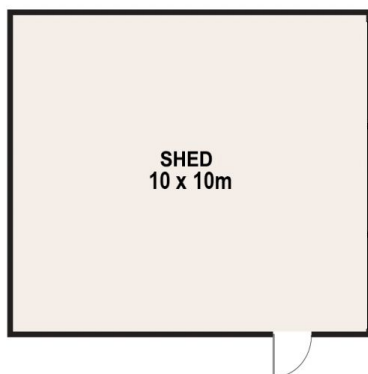
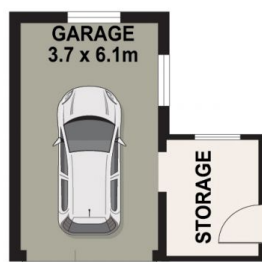
View : <https://www.bennettproperty.com.au/sale/nsw/hawkesbury/yarramundi/residential/house/7170840>



Jacob Bennett
02 4578 1234



Belinda Lovan
02 4578 1234



115 MOUNTAIN AVENUE, YARRAMUNDI

DISCLAIMER

PLANS SHOWN ARE FOR MARKETING PURPOSES ONLY. ALL DIMENSIONS ARE APPROXIMATE AND NOT TO SCALE. THEY ARE SUBJECT TO ERRORS AND INACCURACIES AND NO LIABILITY WILL BE ACCEPTED. INTERESTED PARTIES SHOULD MAKE THEIR OWN INQUIRES.