



### 11 Bayly Court Richmond NSW

3  1  2 

Don't miss this rare opportunity to live in such a sought after town centre location. Quiet cul-de-sac yet only a short stroll to Richmond Marketplace (Big W), city train, parks and churches.

Ranch style ingle level brick veneer home, no stairs on an easy care 594sqm block with established gardens. Extra large lounge area with gas heating, sunny verandah, original kitchen with meals/dinning area. 3 bedrooms - all with built-ins, bathroom with bath, shower and separate toilet. Carport and garage/shed.

So much potential to improve the home and you will not find a better location. Bonus R3 Zoning.

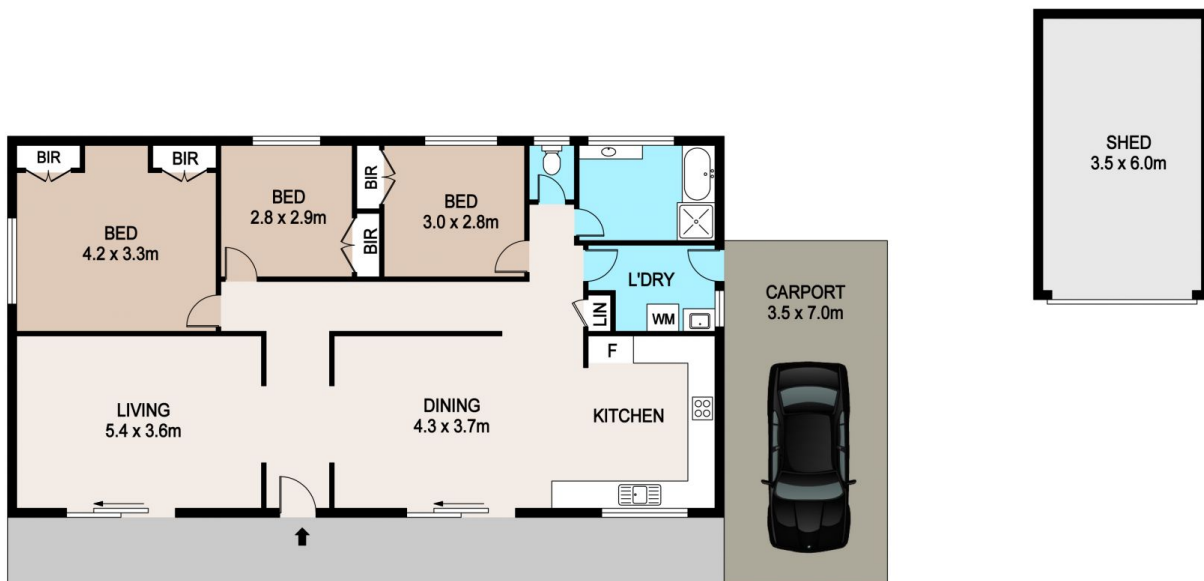
**Price** : \$ 810,000  
**Land Size** : 594 sqm  
**View** : <https://www.bennettproperty.com.au/sale/nsw/hawkesbury/richmond/residential/house/6930685>



**Michael Bennett**  
02 4578 1234



**Jacob Bennett**  
02 4578 1234



## 11 BAYLY CT, RICHMOND

### DISCLAIMER

PLANS SHOWN ARE FOR MARKETING PURPOSES ONLY. ALL DIMENSIONS ARE APPROXIMATE AND NOT TO SCALE. THEY ARE SUBJECT TO ERRORS AND INACCURACIES AND NO LIABILITY WILL BE ACCEPTED. INTERESTED PARTIES SHOULD MAKE THEIR OWN INQUIRES.