



## 6 Burke Avenue Werrington County NSW

4  2  1 

Four bedroom family home with loads of potential to add your own touch. Situated in a great location, on spacious and secure 565sqm block.

Featuring open plan lounge and dining areas with lovely timber floors. Two x split system air conditioners and ceiling fans for extra comfort. Spacious kitchen with great storage and stainless steel appliances. Comfortably sized bedrooms, main with ensuite and walk-in robe. Bathroom with wheel chair access. Additional living areas include modern family room plus study and screened sunroom.

This great family home also offers carport accommodation and large and secure fenced back yard - a great space for the kids to play. Close to Werrington County Public School, local shops, public transport & parklands.

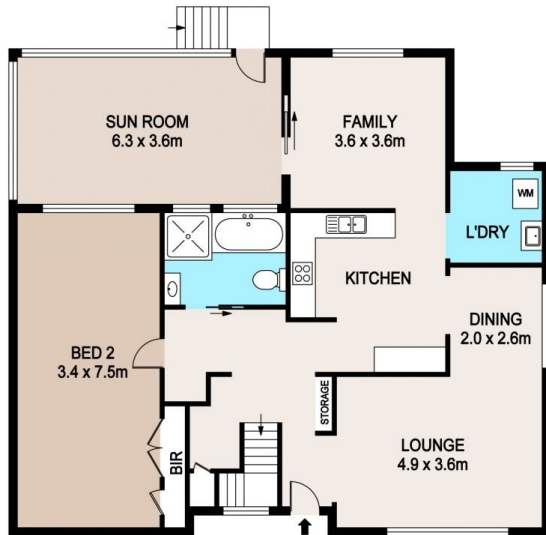
**Price** : \$ 720,000  
**Land Size** : 565 sqm  
**View** : <https://www.bennettproperty.com.au/sale/nsw/western-sydney/werrington-county/residential/house/6818625>



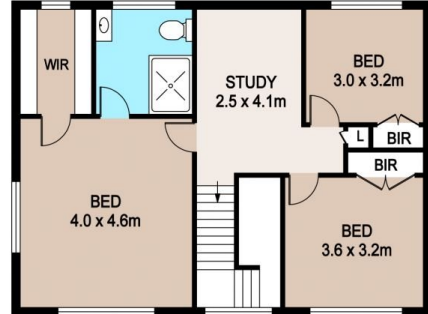
**Michael Bennett**  
02 4578 1234



**Jacob Bennett**  
02 4578 1234



GROUND FLOOR



FIRST FLOOR

## 6 BURKE AVENUE, WERRINGTON COUNTY

### DISCLAIMER

PLANS SHOWN ARE FOR MARKETING PURPOSES ONLY. ALL DIMENSIONS ARE APPROXIMATE AND NOT TO SCALE. THEY ARE SUBJECT TO ERRORS AND INACCURACIES AND NO LIABILITY WILL BE ACCEPTED. INTERESTED PARTIES SHOULD MAKE THEIR OWN INQUIRIES.