



591 Grose Vale Road Grose Vale NSW

6 🏠 5 🚗 12 🚗

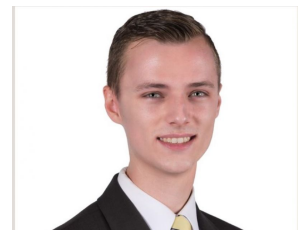
We have the pleasure of presenting "Braeside", a breathtaking resort-style residence situated on approximately 1.62 park-like hectares. Located in the prestigious suburb of Grose Vale and privately positioned with a stunning outlook taking in views of the city and Blue Mountains - this home has so much to offer and is an absolute must to inspect!

This luxurious residence has an abundance of light-filled living spaces and quality designed features. Upon opening the double front doors, be welcomed by an enormous foyer with superb electric fire place. The home has new carpet, Rosewood beams, high raked ceilings, plantation shutters, ducted vacuum, ducted air-conditioning, split system air-conditioning, lounge and dining rooms with sand stock brick walls - open fire place to lounge. Also including a large family room with slow-combustion fireplace and deck

Price : Price Guide \$3,200,000 - 3,400,000
Land Size : 1.62 ha
View : <https://www.bennettproperty.com.au/sale/nsw/hawkesbury/grose-vale/residential/house/6768282>



Michael Bennett
02 4578 1234



Jacob Bennett
02 4578 1234



591 GROSE VALE RD, GROSE VALE

DISCLAIMER

PLANS SHOWN ARE FOR MARKETING PURPOSES ONLY. ALL DIMENSIONS ARE APPROXIMATE AND NOT TO SCALE. THEY ARE SUBJECT TO ERRORS AND INACCURACIES AND NO LIABILITY WILL BE ACCEPTED. INTERESTED PARTIES SHOULD MAKE THEIR OWN INQUIRES.