



## 6 Nina Place Kurrajong Heights NSW

4  2  2 

Located in the beautiful suburb of Kurrajong Heights you will find this large family home offering plenty of space for everyone.

Bright and spacious open plan design with separate formal and casual living areas. Extra large kitchen with an abundance of bench and storage space, gas cooking and stainless steel appliances with Smeg oven. Roomy sized bedrooms, all featuring built-in robes. The main has large walk-in robe and ensuite. The home also features; large laundry with plenty of storage. Year round comfort provided with slow combustion fire place and split system air-conditioning. 5kw solar system, double lock-up garaging and ample off street parking.

Entertaining will be a dream with your enormous undercover outside deck with views! Ample space for

**Price** : \$ 930,000  
**Land Size** : 1012 sqm  
**View** : <https://www.bennettproperty.com.au/sale/nsw/hawkesbury/kurrajong-heights/residential/house/6472616>

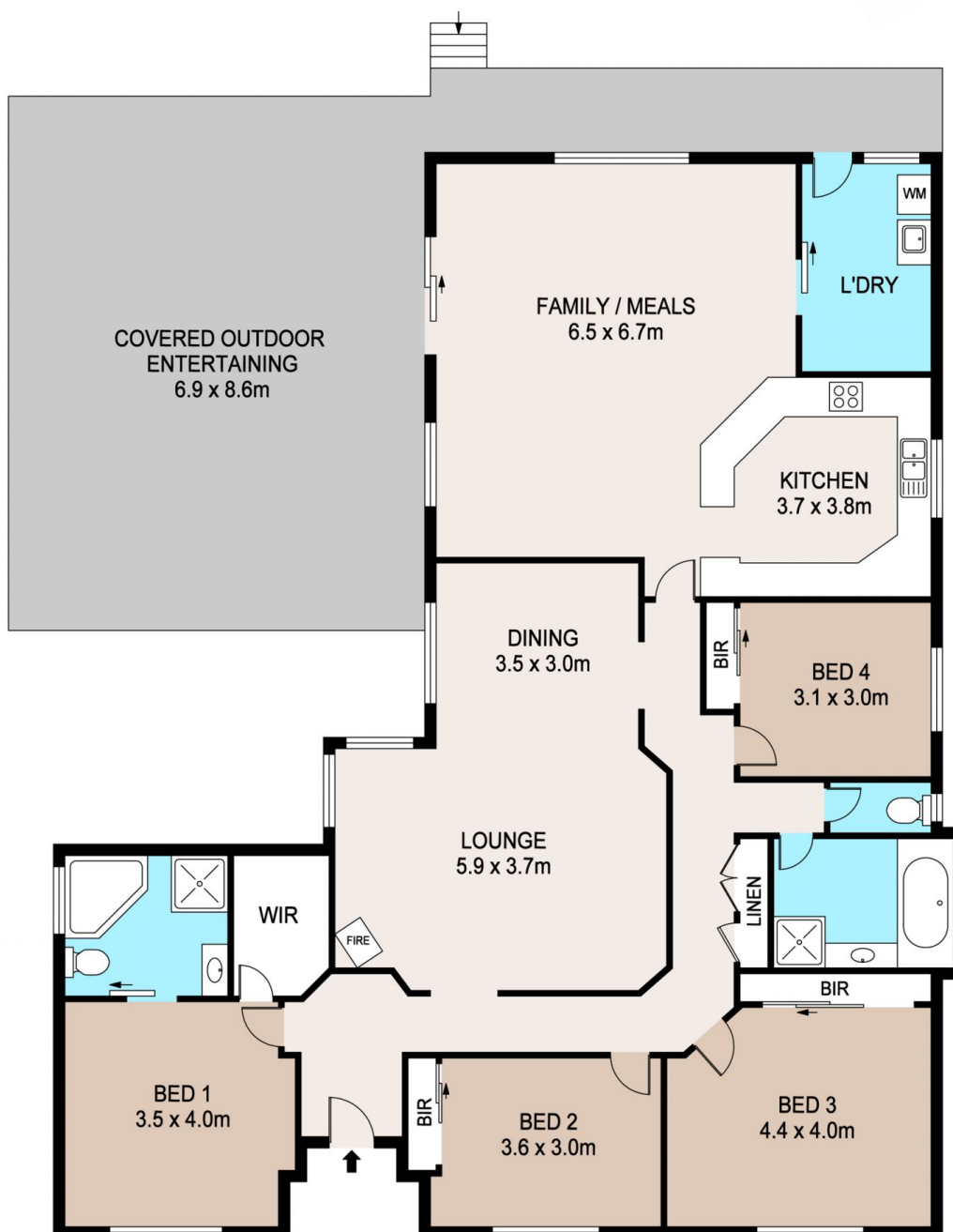


**Michael Bennett**  
02 4578 1234



**Jacob Bennett**  
02 4578 1234





## 6 NINA PLACE, KURRAJONG HEIGHTS

DISCLAIMER: PLANS SHOWN ARE FOR MARKETING PURPOSES ONLY, ALL DIMENSIONS ARE APPROXIMATE AND NOT TO SCALE. THEY ARE SUBJECT TO ERRORS AND INACCURACIES AND NO LIABILITY WILL BE ACCEPTED. INTERESTED PARTIES SHOULD MAKE THEIR OWN INQUIRES.