



4 Susella Crescent North Richmond NSW

5 🛏 2 🚿 2 🚗

Contemporary style family home situated on a lovely 740 sqm (approx) block, located in an exceptionally quiet street.

Price : \$ 941,000
Land Size : 740 sqm
View : <https://www.bennettproperty.com.au/sale/nsw/hawkesbury/north-richmond/residential/home/6470480>

This large and spacious home is perfect for the big or growing family offering 5 generous sized bedrooms plus study. The home has tiled open plan living and dining with neutral colours that create bright, spacious and light filled areas. Experience year round comfort with ducted air-conditioning and newly installed 'Lopi' slow combustion fireplace, which is centrally positioned and confidently supplies adequate heating throughout the home. Entertaining and everyday cooking is made a delight by welcoming country style kitchen with an abundance of storage and bench space and natural light.

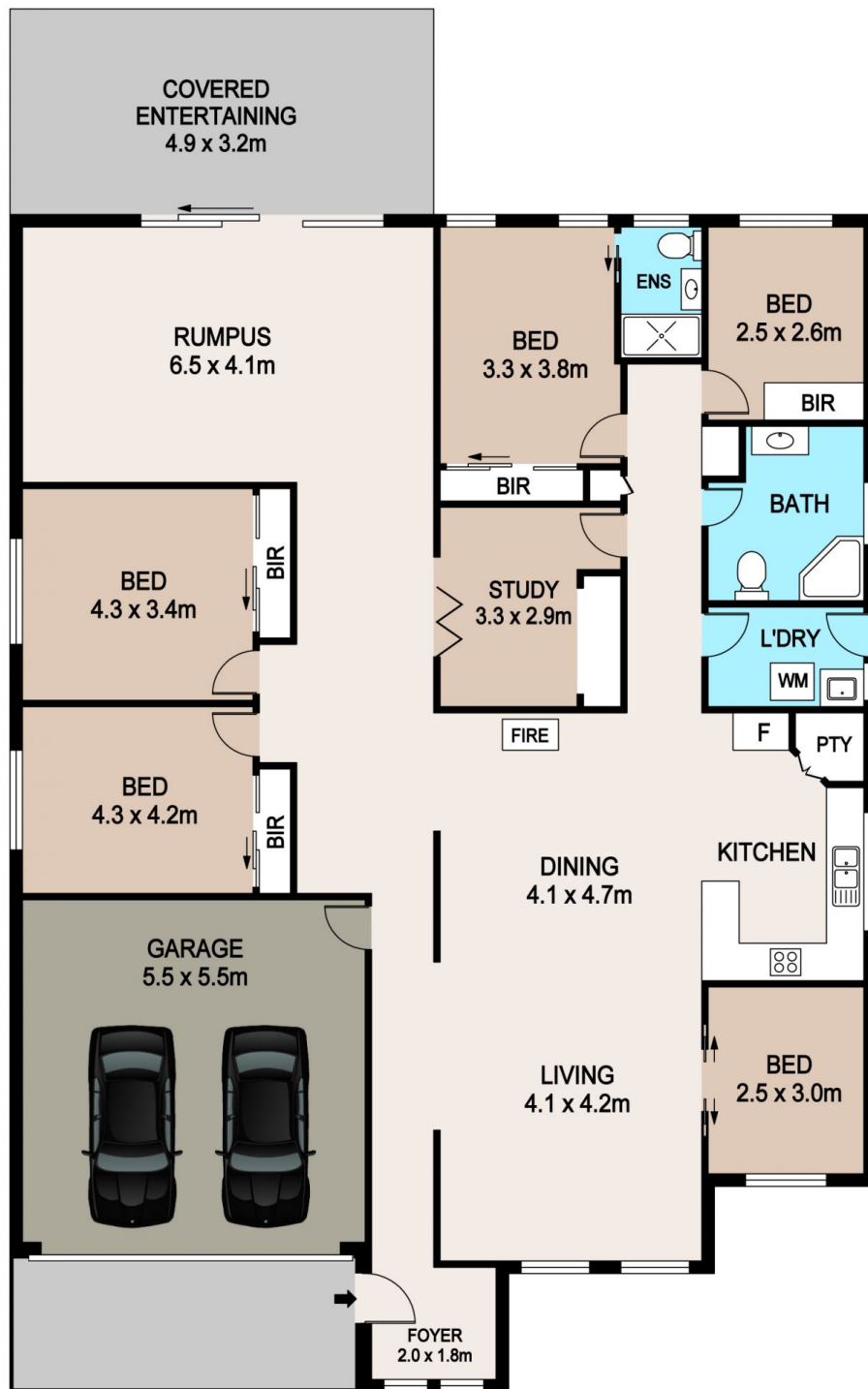
Home also features; generous sized bedrooms - all with



Michael Bennett
02 4578 1234



Jacob Bennett
02 4578 1234



4 SUSELLA CRES, NORTH RICHMOND

DISCLAIMER

PLANS SHOWN ARE FOR MARKETING PURPOSES ONLY. ALL DIMENSIONS ARE APPROXIMATE AND NOT TO SCALE. THEY ARE SUBJECT TO ERRORS AND INACCURACIES AND NO LIABILITY WILL BE ACCEPTED. INTERESTED PARTIES SHOULD MAKE THEIR OWN INQUIRIES.