



14 Longleat Road Kurmond NSW

3 2 1

This lovely three bedroom brick veneer home is located in the quiet suburb of Kurmond and it is the first time offered for sale in 45 years!

Providing formal and informal living areas - the home is very warm and inviting with subtle color tones that tie in with the natural light and slow combustion fireplace for those cold winter nights. A spacious and functional country style kitchen adds ease to cooking and entertaining. Relax or entertain in all seasons on the undercover back deck with distant views. This home also features: built in robes to all bedrooms, downstairs has rumpus/games room, additional study/office or guest room - great for visitors. Single garage with auto roller doors, ample under house storage, bird aviary or chicken coop.

This fetching home is situated on a level 695 sqm (approx)

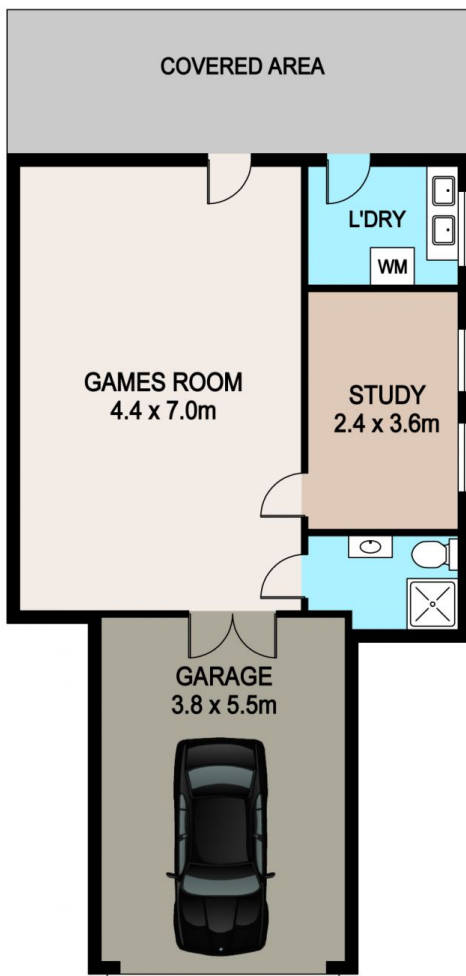
Price : \$ 762,000
Land Size : 695 sqm
View : <https://www.bennettproperty.com.au/sale/nsw/hawkesbury/kurmond/residential/house/6435787>



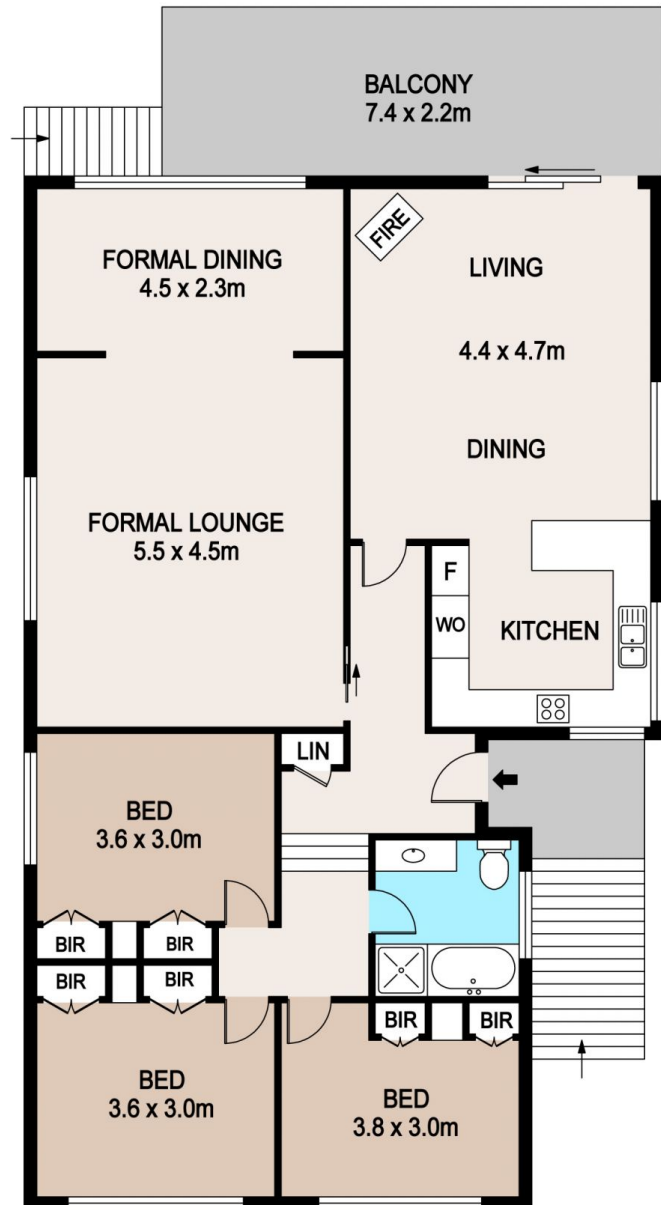
Maurice Mantovani
0409 121 905



Scott Lee
0417 324 812



GROUND FLOOR



UPPER FLOOR

14 LONGLEAT STREET, KURMOND

DISCLAIMER

PLANS SHOWN ARE FOR MARKETING PURPOSES ONLY. ALL DIMENSIONS ARE APPROXIMATE AND NOT TO SCALE. THEY ARE SUBJECT TO ERRORS AND INACCURACIES AND NO LIABILITY WILL BE ACCEPTED. INTERESTED PARTIES SHOULD MAKE THEIR OWN INQUIRES.