



32 Penruddock Street South Windsor NSW

4 1 2

Lovely single level brick veneer home with the perfect family size backyard.

This home has multiple living zones and the potential to be a family home, investment property or home business opportunity. It could be a 4 bedroom home or the 4th bedroom could be setup as a home office with external access for client visits. A large double carport gives plenty of side access to the backyard. With loads of room for a pool or shed. All bedrooms have built-in robes and are carpeted. Ducted air conditioning for year round comfort. Tastefully renovated large bathroom, new hot water system and the roof was upgraded to color bond 10 months ago. Sitting high with a rural outlook, this home is ready to move into.

Located close to Windsor & South Windsor shops and

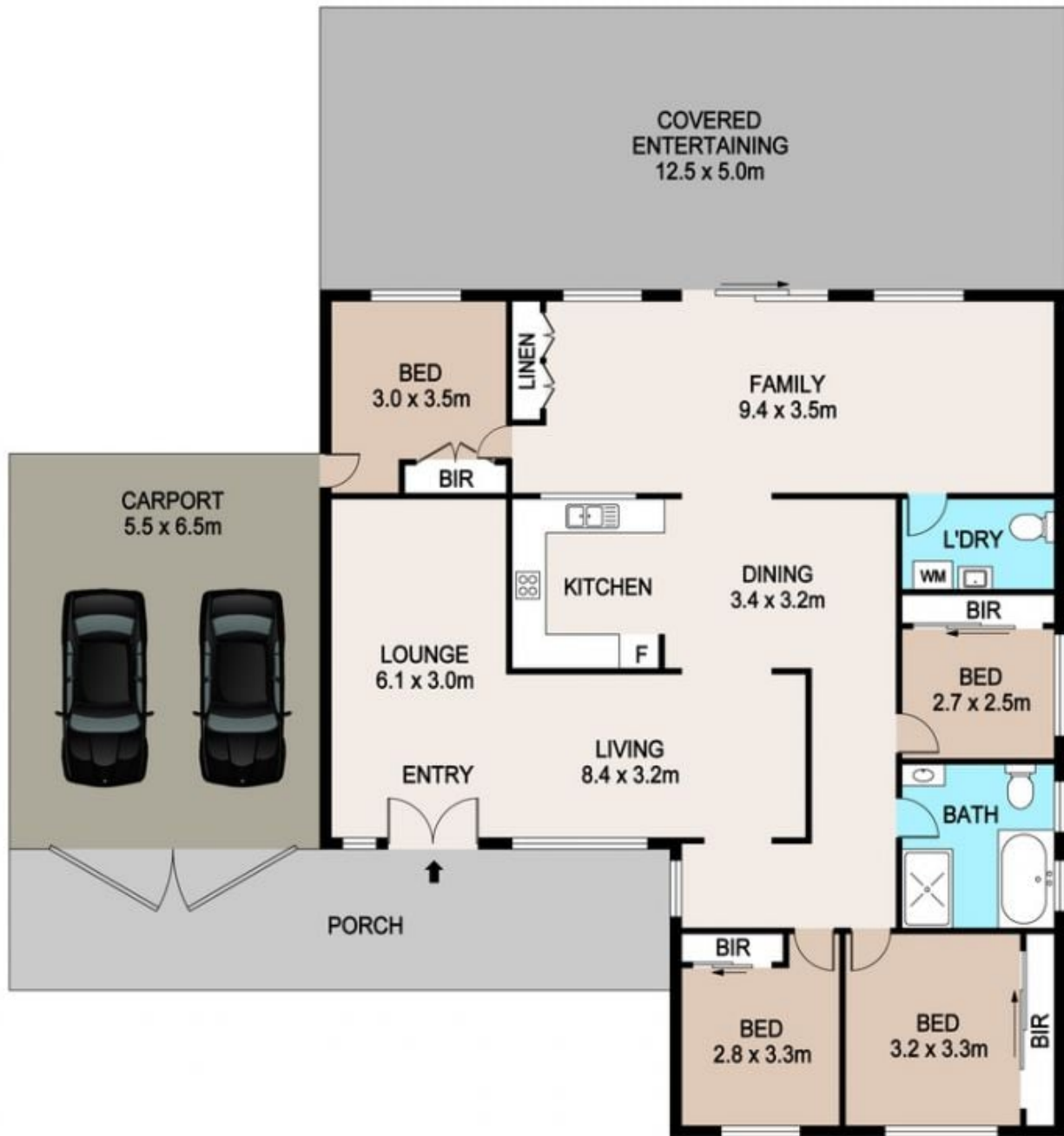
Price : \$ 720,000
Land Size : 703.2 sqm
View : <https://www.bennettproperty.com.au/sale/nsw/hawkesbury/south-windsor/residential/house/6213998>



Maurice Mantovani
0409 121 905



Scott Lee
0417 324 812



32 PENRUDDOCK STREET, SOUTH WINDSOR

DISCLAIMER

PLANS SHOWN ARE FOR MARKETING PURPOSES ONLY. ALL DIMENSIONS ARE APPROXIMATE AND NOT TO SCALE. THEY ARE SUBJECT TO ERRORS AND INACCURACIES AND NO LIABILITY WILL BE ACCEPTED. INTERESTED PARTIES SHOULD MAKE THEIR OWN INQUIRES.