






163 Blaxlands Ridge Road Kurrajong NSW

3  2  5 

Delightful and comfortable three bedroom brick veneer/tile home, located in a beautiful and private rural setting. Spacious living areas with slow combustion fireplace and ducted air-conditioning. Entertaining made enjoyable and easy with saltwater inground pool, Billiards/Games room and covered outdoor entertaining area with a built-in BBQ. Home also features 2 car garaging with 3 carports and a separate lock-up shed.

The land is mostly level and arable (approx. 11.6 acres) with a dam. Ideal for horses or livestock with full sized dressage arena. Four fenced and irrigated paddocks with two horse shelters.

Offering all of the above and more, this property is a must to inspect!

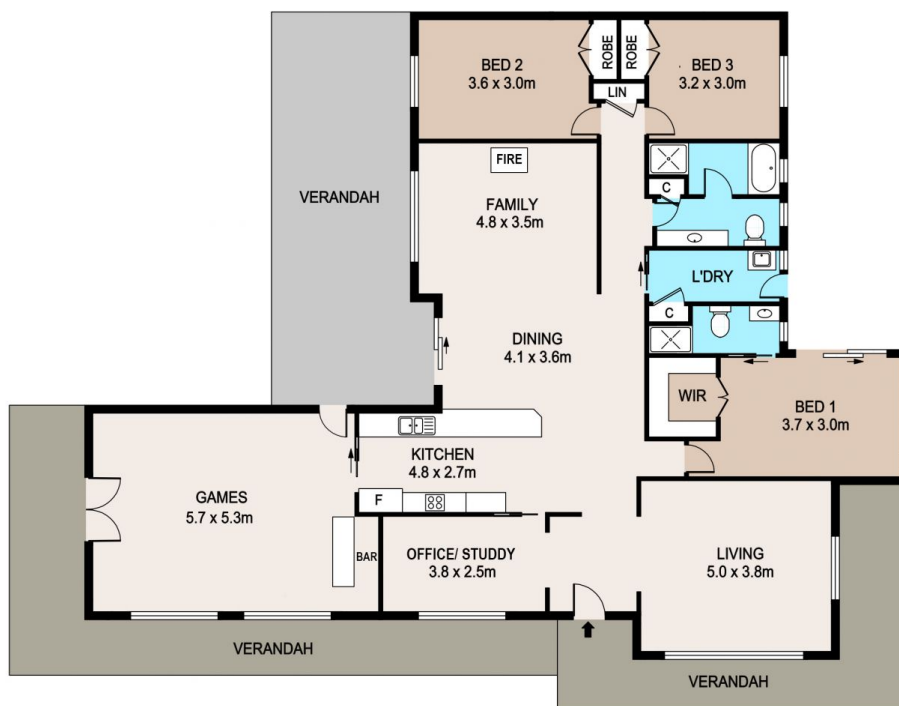
Price : \$ 1,310,000
Land Size : 11.6 Acres
View : <https://www.bennettproperty.com.au/sale/nsw/hawkesbury/kurrajong/residential/house/6213993>



Scott Lee
0417 324 812



Maurice Mantovani
0409 121 905



163 BLAXLANDS RIDGE ROAD, KURRAJONG

DISCLAIMER

PLANS SHOWN ARE FOR MARKETING PURPOSES ONLY. ALL DIMENSIONS ARE APPROXIMATE AND NOT TO SCALE. THEY ARE SUBJECT TO ERRORS AND INACCURACIES AND NO LIABILITY WILL BE ACCEPTED. INTERESTED PARTIES SHOULD MAKE THEIR OWN INQUIRES.

