



47 Waratah Street Bowen Mountain NSW

4  2  1 

This beautifully presented and well maintained 4 bedroom brick veneer home is located in the quiet, family friendly suburb of Bowen Mountain. Perfect home for the growing family, featuring open plan living areas, polished timber floors and spacious kitchen with modern appliances and gas cooking. Formal lounge and dining area with family and rumpus room. Separate meals and dining area. Split system air-conditioning and slow combustion fireplace and additional gas ports for year round comfort. Other features include: Convenient, under house storage. 60,000 litre in ground water tank. Off-street parking for all the toys

Situated on a level low-maintenance block (approx. 657sqm) with established lawns and landscaped gardens. Fully fenced backyard that backs onto the National Park. Experience Mountain living with the vast selections of wildlife, bird life, walking trails and scenic outlooks. This

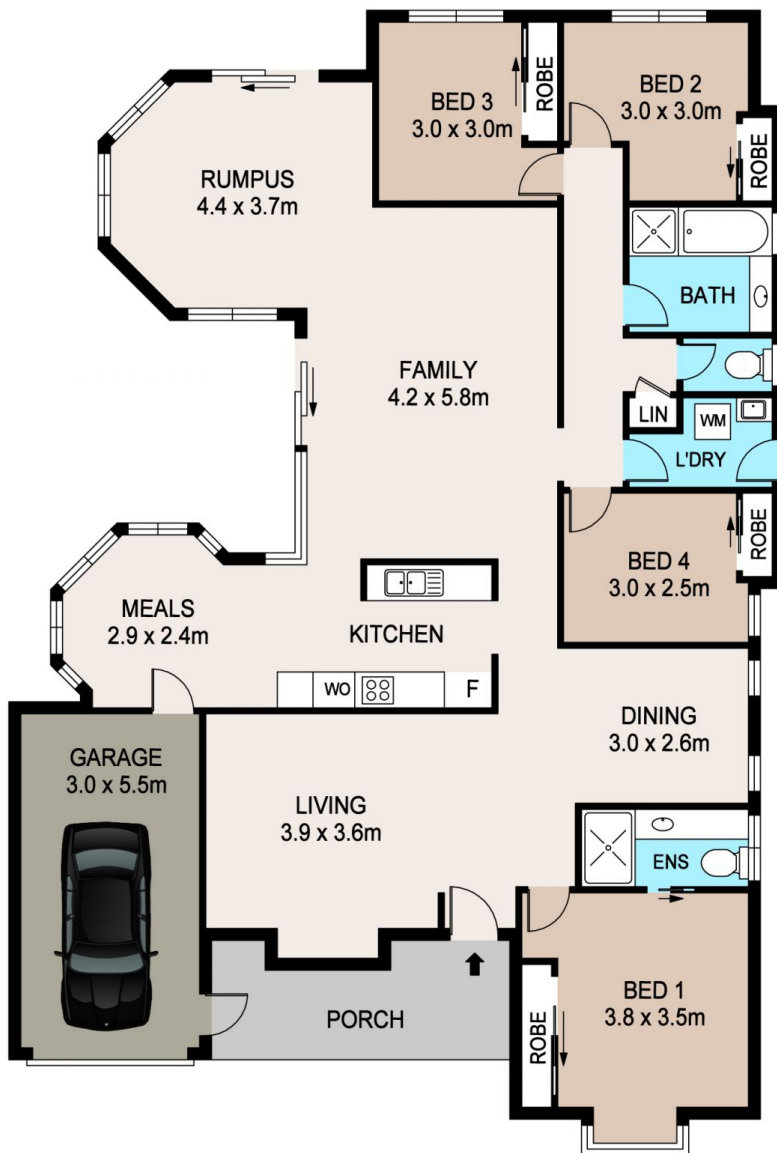
Price : \$ 680,000
Land Size : 657 sqm
View : <https://www.bennettproperty.com.au/sale/nsw/hawkesbury/bowen-mountain/residential/house/6213990>



Scott Lee
0417 324 812



Maurice Mantovani
0409 121 905



47 WARATAH STREET, BOWEN MOUNTAIN

DISCLAIMER

PLANS SHOWN ARE FOR MARKETING PURPOSES ONLY. ALL DIMENSIONS ARE APPROXIMATE AND NOT TO SCALE. THEY ARE SUBJECT TO ERRORS AND INACCURACIES AND NO LIABILITY WILL BE ACCEPTED. INTERESTED PARTIES SHOULD MAKE THEIR OWN INQUIRES.