






38 Wellesley Street Pitt Town NSW

4  3  3 

This spectacular renovated family home is a must to inspect, with plenty of room for the whole family!

Stunning contemporary design including modern features and fixtures throughout and boasting multiple living spaces, this home is perfect for entertaining! All 3 upstairs bedrooms are carpeted with built in robes, downstairs you will find a large guest accommodation with walk-through robe and large modern ensuite. There are 2 additional bathrooms, both beautifully renovated, large internal laundry, open plan living, stylish kitchen with stainless steel appliances and main living accesses the front balcony.

Bonus to this home is a separate games room, fantastic rustic covered entertaining area off the pool yard with its own toilet. Gorgeous inground mineral pool for the summer months. Other features include: Downlights, a 2 car garage

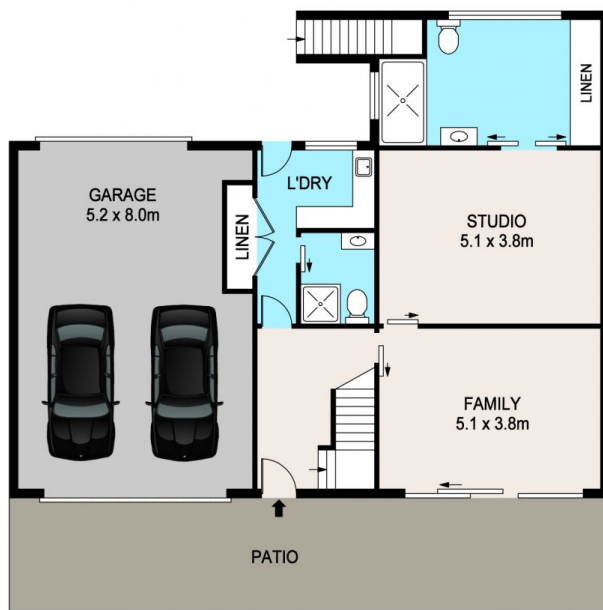
Price : \$ 870,000
Land Size : 588 sqm
View : <https://www.bennettproperty.com.au/sale/nsw/hawkesbury/pitt-town/residential/house/6213985>



Maurice Mantovani
0409 121 905



Scott Lee
0417 324 812



38 WELLESLEY STREET, PITT TOWN

DISCLAIMER

PLANS SHOWN ARE FOR MARKETING PURPOSES ONLY. ALL DIMENSIONS ARE APPROXIMATE AND NOT TO SCALE. THEY ARE SUBJECT TO ERRORS AND INACCURACIES AND NO LIABILITY WILL BE ACCEPTED. INTERESTED PARTIES SHOULD MAKE THEIR OWN INQUIRES.

