



## 299 Lieutenant Bowen Drive Bowen Mountain NSW

4 2

Warm and inviting two storey home situated on a large 1,695sqm block, backing onto the National Park. This wonderful family home offers four bedrooms with two bathrooms - ideal for the growing or large family and also including an extra study. The home has a lovely indoor/outdoor flow with a bright and airy interior. New floors and freshly painted throughout, compliments the beautifully neutral and modern decorating canvas. Separate lounge and dining areas with spacious kitchen. Polished timber floors flow through to the top and lower decks overlooking the terraced yard providing uninterrupted views right to the city! Experience mountain living with the vast selections of wildlife, bird life, walking trails and scenic outlooks. This tranquil sanctuary offers an enviable lifestyle at an affordable price all in close proximity to Kurrajong Village, North Richmond, bus to local schools and shops. With an abundance of room inside and out, this

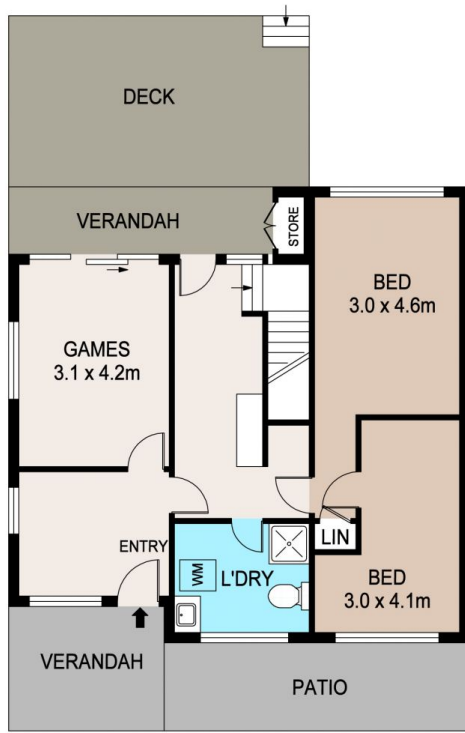
**Price** : \$ 640,000  
**Land Size** : 1695 sqm  
**View** : <https://www.bennettproperty.com.au/sale/nsw/hawkesbury/bowen-mountain/residential/house/6213948>



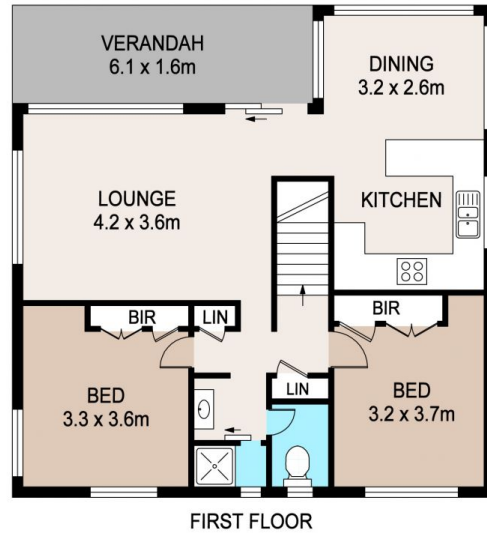
**Scott Lee**  
0417 324 812



**Maurice Mantovani**  
0409 121 905



GROUND FLOOR



FIRST FLOOR

## 299 LIEUTENANT BOWEN DRIVE, BOWENMOUNTAIN

**DISCLAIMER**

PLANS SHOWN ARE FOR MARKETING PURPOSES ONLY. ALL DIMENSIONS ARE APPROXIMATE AND NOT TO SCALE. THEY ARE SUBJECT TO ERRORS AND INACCURACIES AND NO LIABILITY WILL BE ACCEPTED. INTERESTED PARTIES SHOULD MAKE THEIR OWN INQUIRES.

