



35 Bosworth Street Richmond NSW

4 1

Brand new 5 year lease to a medical firm. Starting at \$45k per annum for first 3 years. Increases to \$50k in year 4 and \$55k in year 5.

On a large 847 sq metre block with plenty of exposure and off street parking this fully renovated cottage offers older style character and appeal. Many original features - high ceilings with decorative cornices, timber joinery, 3 fireplaces and verandahs. Multiple living areas with up to 5 professional rooms, Air-conditioned. Modern kitchen and bathroom, NBN. Separate s/c studio.

BETTER THAN MONEY IN THE BANK

Price : \$ 880,000
Building Size : 170 sqm
Land Size : 847.3 sqm
View : <https://www.bennettproperty.com.au/sale/nsw/hawkesbury/richmond/residential/house/6213941>



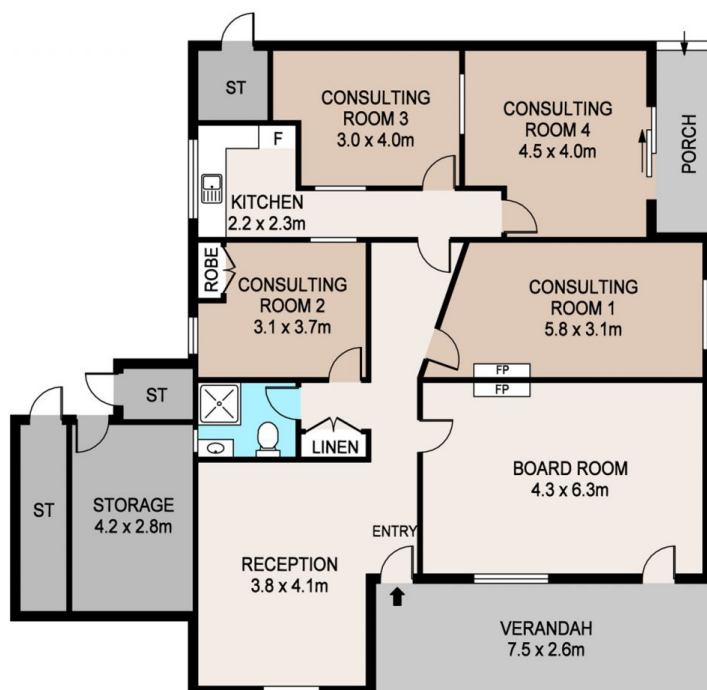
Michael Bennett
02 4578 1234



Jacob Bennett
02 4578 1234



STUDIO



35 BOSWORTH ST, RICHMOND

DISCLAIMER

PLANS SHOWN ARE FOR MARKETING PURPOSES ONLY. ALL DIMENSIONS ARE APPROXIMATE AND NOT TO SCALE. THEY ARE SUBJECT TO ERRORS AND INACCURACIES AND NO LIABILITY WILL BE ACCEPTED. INTERESTED PARTIES SHOULD MAKE THEIR OWN INQUIRES.

