



65 Bowen Mountain Road Bowen Mountain NSW

4 🏠 2 🚗 1 🚗

Contemporary design boasting versatile living spaces and a lovely indoor/outdoor flow, this steel framed tri level home is picturesquely set on a 607sqm block. With four bedrooms and multiple living spaces, the home provides flexibility for the growing family. Separate lounge and dining areas, timber and tiled flooring, split system air conditioning and ducted vacuum . Open plan modernised kitchen with stainless-steel appliances. Main bedroom with ensuite and built-in robe and balcony plus additional main bathroom with bath. The rear deck overlooks the fully fenced, terraced yard with views out across to the national park. Plenty of storage with single carport. This affordable home offers all the conveniences of modern day living and is a must see.

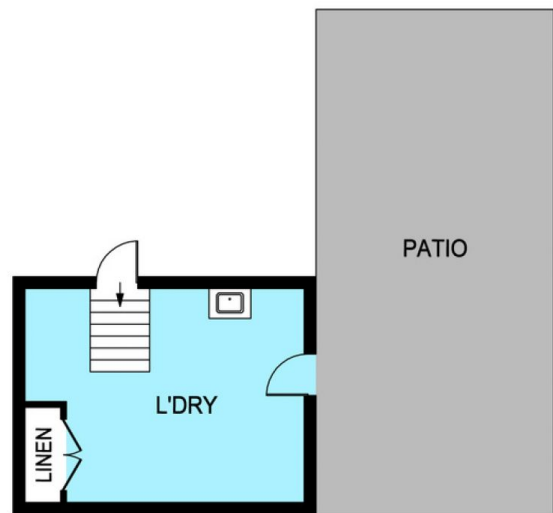
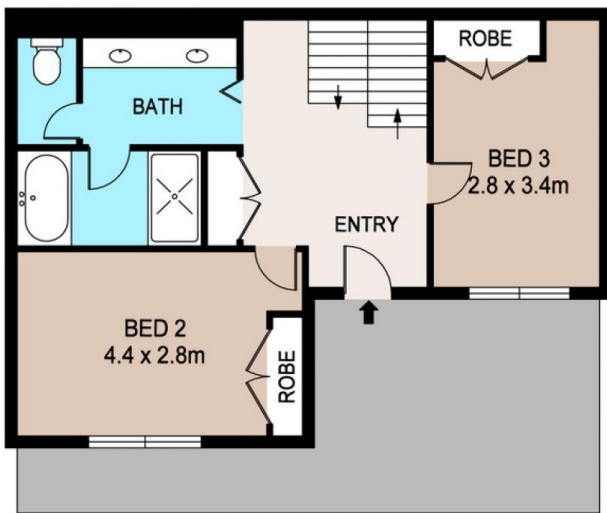
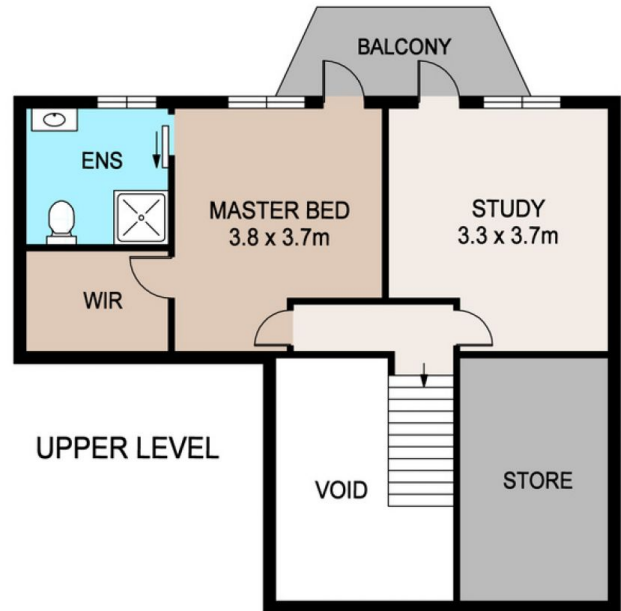
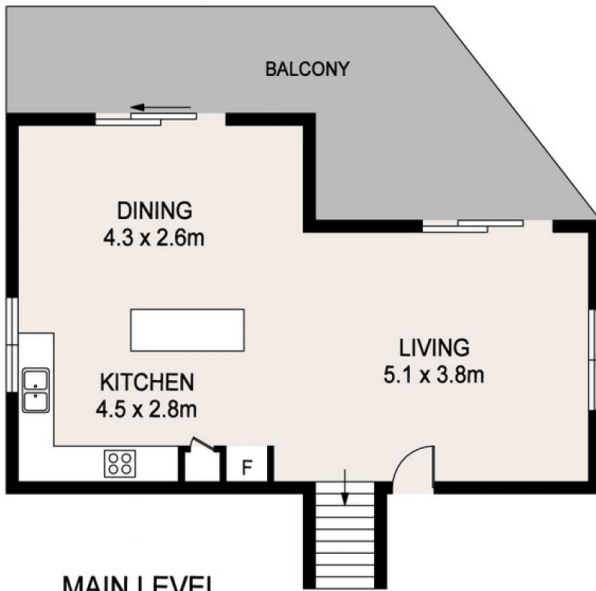
Price : \$ 645,000
Land Size : 607 sqm
View : <https://www.bennettproperty.com.au/sale/nsw/hawkesbury/bowen-mountain/residential/house/6213933>



Scott Lee
0417 324 812



Maurice Mantovani
0409 121 905



65 BOWEN MOUNTAIN ROAD, BOWEN MOUNTAIN

DISCLAIMER

PLANS SHOWN ARE FOR MARKETING PURPOSES ONLY. ALL DIMENSIONS ARE APPROXIMATE AND NOT TO SCALE. THEY ARE SUBJECT TO ERRORS AND INACCURACIES AND NO LIABILITY WILL BE ACCEPTED. INTERESTED PARTIES SHOULD MAKE THEIR OWN INQUIRES.