



5 Bellbird Crescent Bowen Mountain NSW

2  1  1 

Quaint 2 bedroom cottage with Stunning city view.

The very cosy mountain cottage has open-plan living/dining space with timber floors, exposed ceiling beams. A slow combustion fireplace and new split system air conditioner. A brand new kitchen with new oven, cooktop and rangehood. The main bedroom includes a built-in robe, views and sliding glass door that open to the rear deck.

With a large rear deck area with sweeping panoramic views, plus a tiled undercover area with built-in BBQ. A single lock-up garage has recently been converted to a games room and storage space. Just 10 minutes to local schools and shops, this home offers a peaceful, relaxing lifestyle close to Kurrajong Village.

- Under instruction from the NSW Public Trustee and

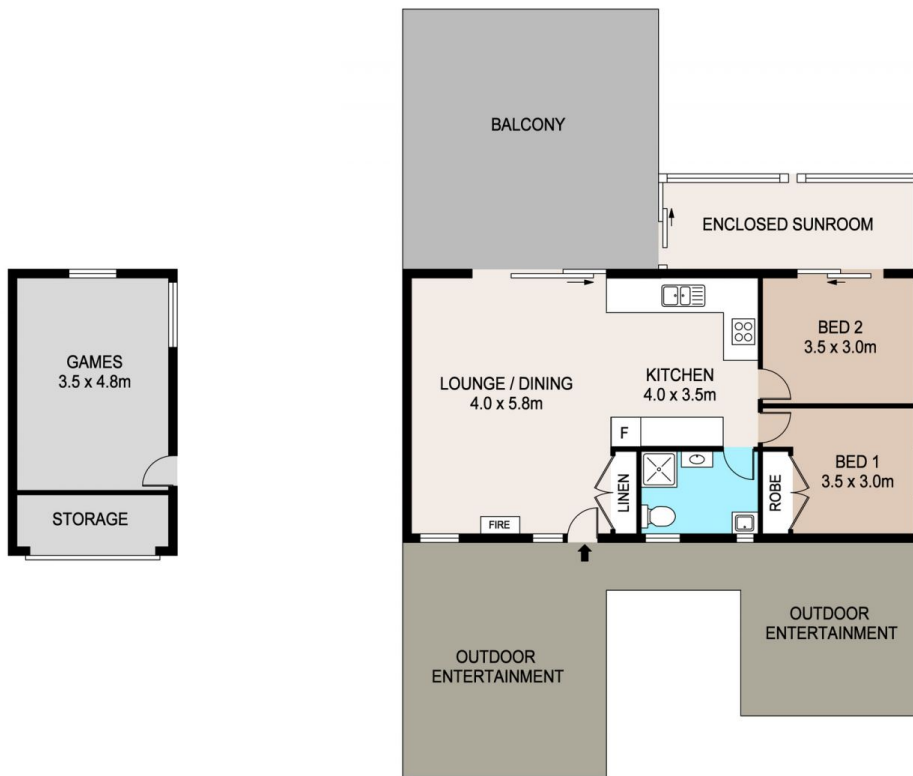
Price : \$ 506,000
Land Size : 569 sqm
View : <https://www.bennettproperty.com.au/sale/nsw/hawkesbury/bowen-mountain/residential/house/6213915>



Scott Lee
0417 324 812



Maurice Mantovani
0409 121 905



5 BELLBIRD CRESCENT BOWEN MOUNTAIN

DISCLAIMER

PLANS SHOWN ARE FOR MARKETING PURPOSES ONLY. ALL DIMENSIONS ARE APPROXIMATE AND NOT TO SCALE. THEY ARE SUBJECT TO ERRORS AND INACCURACIES AND NO LIABILITY WILL BE ACCEPTED. INTERESTED PARTIES SHOULD MAKE THEIR OWN INQUIRES.

