

2 Lieutenant Bowen Road Bowen Mountain NSW

3  2  2 

Architecturally inspired designer home, situated in arguably one of the best positions in Bowen Mountain next to Devils Hole Creek Reserve with stunning views over the mountains. Luxurious features and quality appointments throughout this private mountain hideaway is the home you've been looking for.

The main level has an open plan design with soaring timber lined ceilings and Jarrah timber floors. Doors and louvre windows along two walls capitalize on the favourable north aspect and amazing views. Funky kitchen with granite benchtops, glass splashback, breakfast bar and gas cooktop combines with the dining and living area with split system air con. Flowing out to a covered entertainers deck, the perfect place to entertain or peacefully sit and enjoy the serenity. In addition to the open plan living space there is a private formal lounge room.

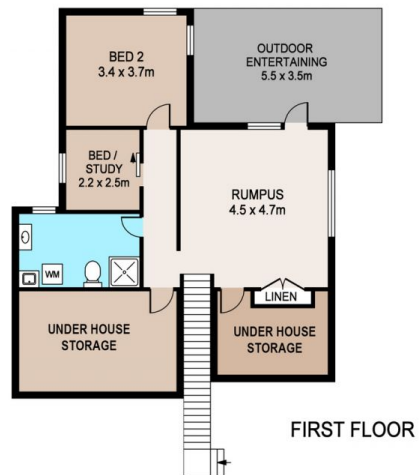
Price : \$ 690,000
Land Size : 563 sqm
View : <https://www.bennettproperty.com.au/sale/nsw/hawkesbury/bowen-mountain/residential/house/6213885>



Scott Lee
0417 324 812



Michael Bennett
02 4578 1234



2 LIEUTENANT BOWEN ROAD, BOWEN MOUNTAIN

DISCLAIMER

PLANS SHOWN ARE FOR MARKETING PURPOSES ONLY. ALL DIMENSIONS ARE APPROXIMATE AND NOT TO SCALE. THEY ARE SUBJECT TO ERRORS AND INACCURACIES AND NO LIABILITY WILL BE ACCEPTED. INTERESTED PARTIES SHOULD MAKE THEIR OWN INQUIRIES.