



498 Comleroy Road Kurrajong NSW

3 1 2

Comfortable three bedroom, single level, brick veneer home.

Approximately 10 Acres with two dams, 1/2 an acre cleared around the house. Corner position with private road access to the side and back of the property. Privately situated with amazing views, only one neighbour, basic shedding and a huge potential to renovate and add value for the future. Great opportunity to buy affordable acres, property in need of a little TLC.

Lovely outlook and located a few minutes from Kurrajong Village.

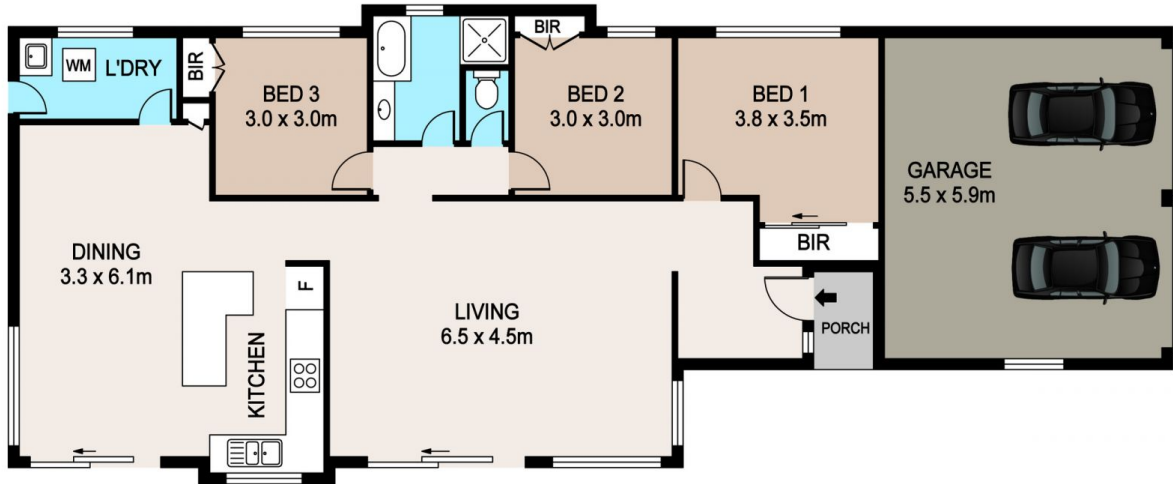
Price : \$ 881,000
Land Size : 4.131 ha
View : <https://www.bennettproperty.com.au/sale/nsw/hawkesbury/kurrajong/residential/house/6213849>



Maurice Mantovani
0409 121 905



Scott Lee
0417 324 812



498 COMLERoy ROAD, KURRAJONG

DISCLAIMER

PLANS SHOWN ARE FOR MARKETING PURPOSES ONLY. ALL DIMENSIONS ARE APPROXIMATE AND NOT TO SCALE. THEY ARE SUBJECT TO ERRORS AND INACCURACIES AND NO LIABILITY WILL BE ACCEPTED. INTERESTED PARTIES SHOULD MAKE THEIR OWN INQUIRES.

