



72 Tyne Crescent North Richmond NSW

3  1  1 

This generously proportioned, well maintained brick veneer property is proudly positioned on a 796sqm block within close vicinity of schools, transport and shops.

Spacious formal lounge leads to formal dining room and through to a large kitchen with casual meals area. Three bedrooms, two with built-in robes, main bathroom with separate shower and bath.

Well cared for and in great condition, the home has been updated over time and was recently painted, provides ceiling fans throughout and a split system air conditioner.

Sizeable outdoor covered entertaining area, lock up garage with auto door, laundry and garden shed. Situated on a fully fenced child friendly corner block this home is ready to move into today and offers great future potential.

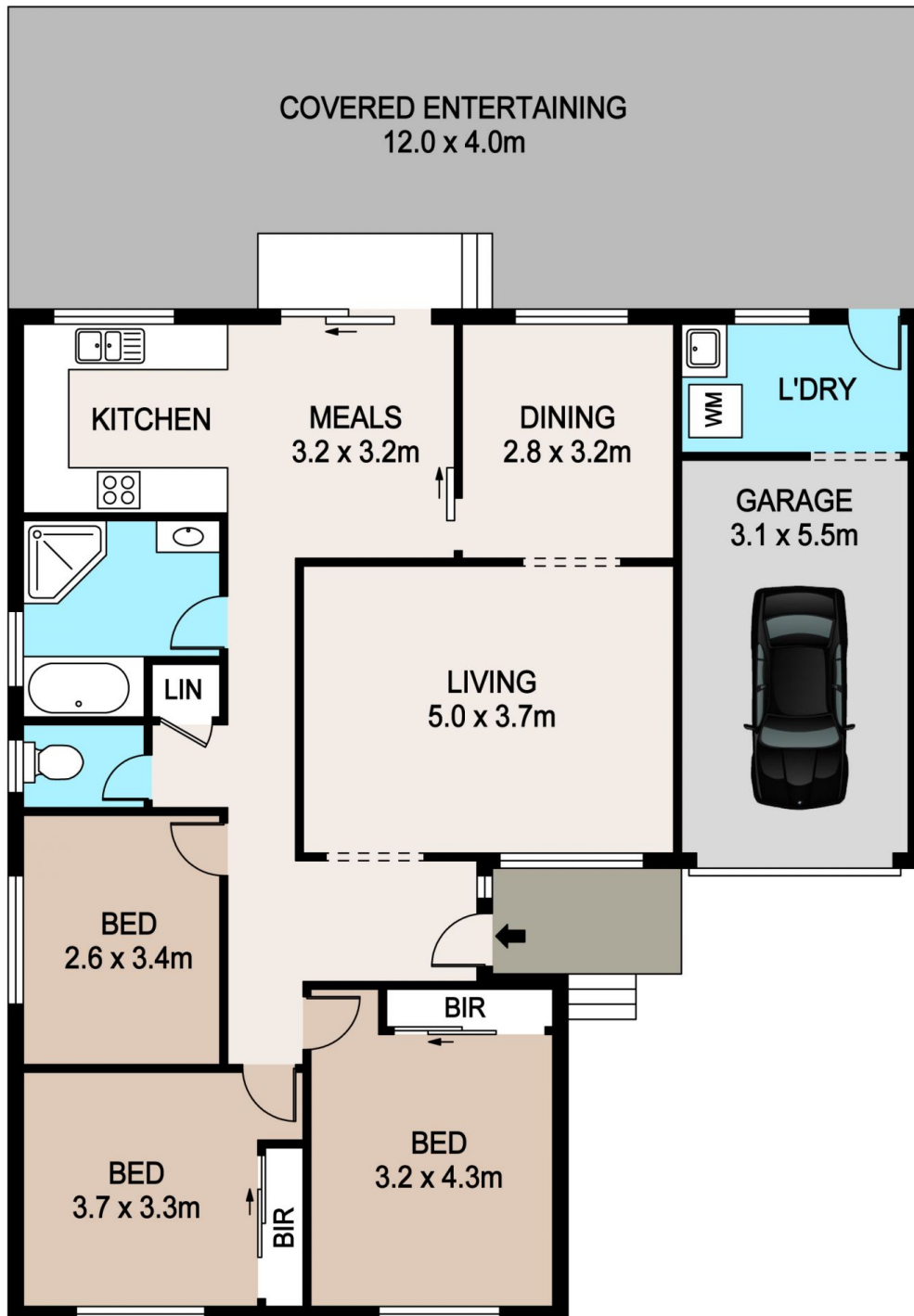
Price : \$ 570,000
Land Size : 796.7 sqm
View : <https://www.bennettproperty.com.au/sale/nsw/hawkesbury/north-richmond/residential/home/6213841>



Michael Bennett
02 4578 1234



Jacob Bennett
02 4578 1234



72 TYNE CRESCENT NORTH RICHMOND

DISCLAIMER

PLANS SHOWN ARE FOR MARKETING PURPOSES ONLY. ALL DIMENSIONS ARE APPROXIMATE AND NOT TO SCALE. THEY ARE SUBJECT TO ERRORS AND INACCURACIES AND NO LIABILITY WILL BE ACCEPTED. INTERESTED PARTIES SHOULD MAKE THEIR OWN INQUIRIES.

