



10 Crag Crescent Bowen Mountain NSW

4 2 1

This beautiful 4 Bedroom, 2 storey timber home features soaring ceilings and solid polished timber floors throughout, with large upper and lower rear decks with filtered city views!

There is a large combined lounge and dining with a second living area. All 4 generous bedrooms have built-in-robos and Master suite with a walk in robe, ensuite and balcony. For all year comfort there is a split system air conditioner and a slow combustion fire. The modern, well equipped kitchen has a dishwasher and pantry.

Just move in and enjoy the peaceful mountain lifestyle! Located just a short drive to Kurrajong Village schools, shops and cafes!

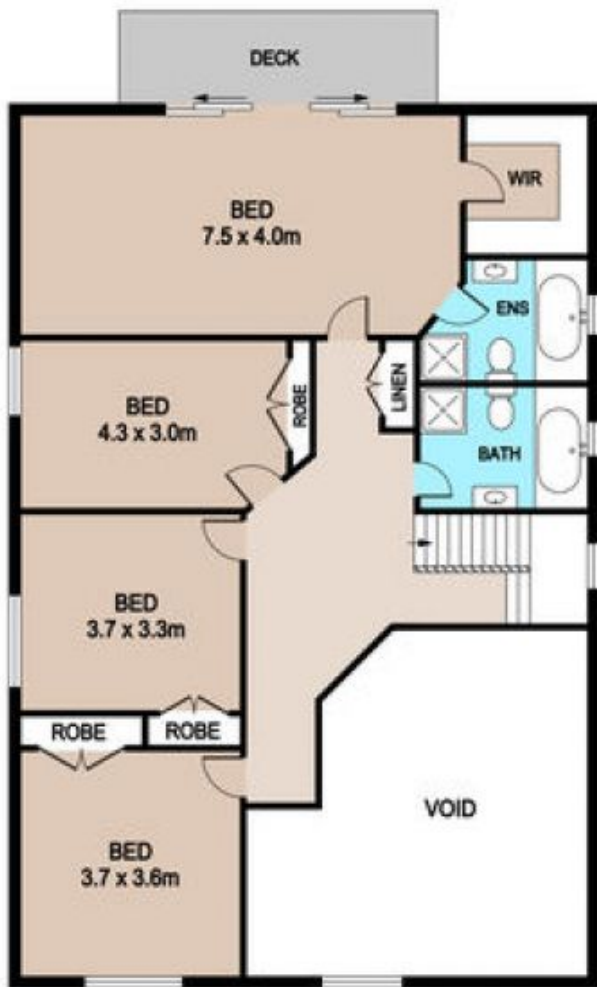
Price : \$ 650,000
Land Size : 556 sqm
View : <https://www.bennettproperty.com.au/sale/nsw/hawkesbury/bowen-mountain/residential/house/6213822>



Scott Lee
0417 324 812



Maurice Mantovani
0409 121 905



UPPER FLOOR



GROUND FLOOR

10 CRAG CRESCENT, BOWEN MOUNTAIN

DISCLAIMER

PLANS SHOWN ARE FOR MARKETING PURPOSES ONLY. ALL DIMENSIONS ARE APPROXIMATE AND NOT TO SCALE. THEY ARE SUBJECT TO ERRORS AND INACCURACIES AND NO LIABILITY WILL BE ACCEPTED. INTERESTED PARTIES SHOULD MAKE THEIR OWN INQUIRIES.

