



12 Ski Lodge Road Lower Portland NSW

3  1  3 

Located close to the river and only 500 metres from the local boat ramp, this property is a must see for water-skiers and anyone looking for a relaxed and tranquil lifestyle! This brick veneer home resides on a 721 sqm, fully fenced block with drive through access. Offering 3 carpeted bedrooms all with ceiling fans and master with air conditioning. The open plan living and dining area has a slow combustion fireplace, split system air conditioning and ceiling fans. The large, tiled kitchen boasts a gourmet freestanding oven with stainless steel rangehood.

Step outside to the covered entertaining area which flows out onto the pet friendly yard. Look after the lawns and gardens with the benefit of bore water. The massive approx. 130sqm shed has three bay garaging, separate work shop, 3 phase power, solar panels, plus a store room.

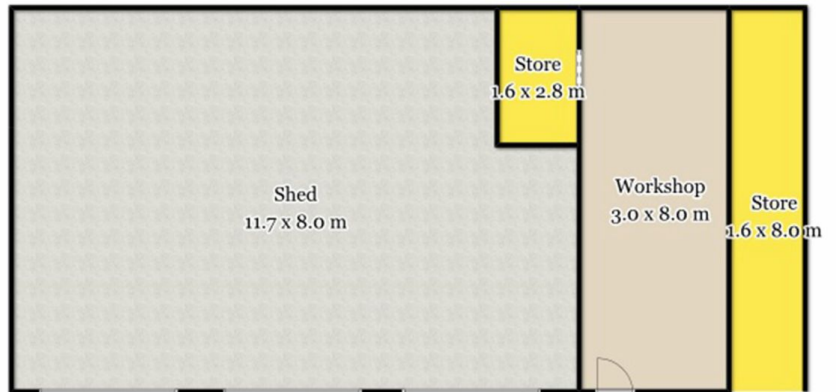
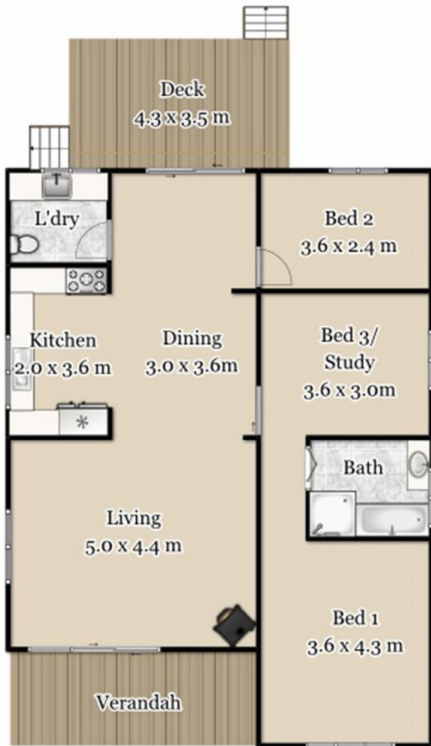
Price : \$ 660,000
Land Size : 720 sqm
View : <https://www.bennettproperty.com.au/sale/nsw/hawkesbury/lower-portland/residential/home/6213801>



Maurice Mantovani
0409 121 905



Scott Lee
0417 324 812



Lower Portland

Every attempt has been made to ensure the accuracy of the floor plan contained here, measurements are approximate and no responsibility is taken for any error, omission, or mis-statement. This plan is for illustrative purposes only.